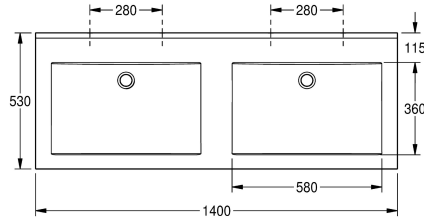
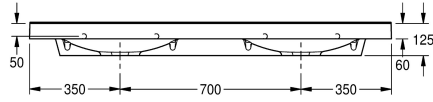
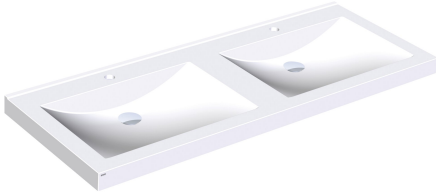


KWC QUADRO Double washbasin

Modell-Linie: **QUADRO | ANMW420**
Washbasins & Washtroughs | Wash basins



KWC-No.

2000090013

With 35 mm diameter tap holes

2000090012

Without tap holes

number of tap holes

2

QUADRO double washbasin made of MIRANIT resin-bonded mineral material with smooth, pore-free surface (temperature resistant up to 80°C). Colour Alpine white. With two seamless, rectangular bowls, without overflow. Mounting on washbasin back panel. Rear contoured edge. Three-sided apron 60 mm (H). Without

tap holes. Mounting material included.

Dimensions 1400 x 125 x 530 mm (W x H x D)
Bowl dimensions 580 x 90 x 360 mm (W x H x D)

Technical Data

bowl position
bowl - bowl height
bowl - depth
bowl shape
bowl - width
colour
distance between bowls
material
material code
overall depth
overall height
overall width
overflow
rear upstand
siphon included
splash back
tap ledge
type of mounting
waste hole position
waste hole projection
waste kit included
waste size

Center
90 mm
360 mm
rectangle
580 mm
alpinewhite
700 mm
mineral material
Miranit
530 mm
125 mm
1,400 mm
No
Yes
No
No
Yes
wall mounting
centre back
185 mm
No
DN 32

Optional Accessories

KWC QUADRO Double washbasin

Modell-Linie: QUADRO | ANMW420
Washbasins & Washtroughs | Wash basins



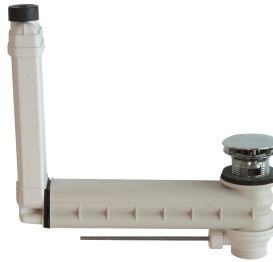
Strainer waste

2000100854
ZANMW901



Dome waste valve

2000100861
ZANMW900



Drain and overflow set

2000100932
ZANMW902



Trap

2000057417
XINX140