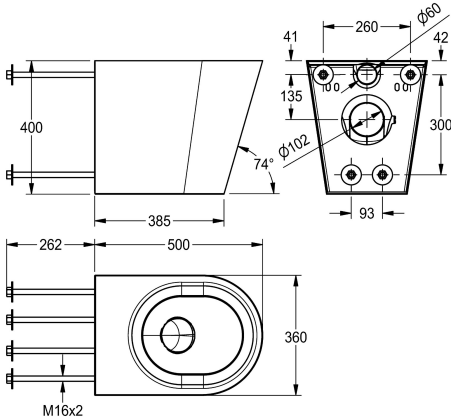




KWC HEAVY-DUTY
Floor standing WC pan

Modell-Linie: HEAVYDUTY | HDTX597
WCs and urinals | WCs



KWC-No.

2000100729

Dimensions 360 x 400 x 500 mm (W x H x D)

Campus floor standing WC pan for fitting through duct wall, manufactured from grade 1.4301 (304) stainless steel, material thickness 1,5 mm for the pan and shroud - satin polish finish. The WC incorporates a stainless steel P trap 102 mm o/d. A separate mounting plate and 4 bolts are provided for mounting the WC through a duct wall. The Campus WC has a pressed seating area that does not require a separate seat in vandal prone installations.

However, a seat and lid can be fitted. Approval: Complies with BS EN 997 for 4.5 litre flushing. Also complies with the Australian and German test standards.

Without seat and lid
Dimensions 360 x 400 x 500 mm (W x H x D)

Technical Data

| |
|---------------------------|
| inlet size |
| material |
| material code |
| material thickness |
| minimum flushing capacity |
| outlet size |
| overall depth |
| overall height |
| overall width |
| surface finish |
| type of mounting |
| type of toilet seat |
| type of WC |

| |
|--------------------------------|
| DN 55 |
| stainless steel |
| 1.4301 Chrome Nickel steel V2A |
| 1.5 mm |
| 4 Liter |
| DN 100 |
| 500 mm |
| 400 mm |
| 360 mm |
| satin finished |
| bolt fix with duct wall |
| no seat |
| wall hung |

