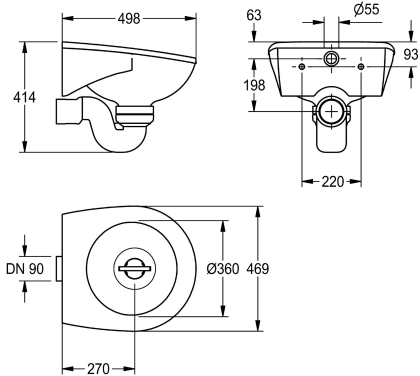




KWC SIRIUS
Disposal sink

Modell-Linie: SIRIUS | SIRW511
Utility sinks | Cleaners sinks



KWC-No.

2000101200

Disposal sink for wall mounting made of MIRANIT resin-bonded mineral material. With pore-free, smooth surface (temperature-resistant up to 80 °C). Alpine white colour. Round bowl with integrated circular flushing rim, internal horizontal water connection. Integral back panel with integrated brackets and holes for fixing. Fastening material included. Siphon made of plastic material DN

100 with horizontal outlet. With outlet grating made of nickel-chromium steel to prevent clogging.

Dimensions 469 x 414 x 498 mm (W x H x D)
Bowl diameter 360 mm

Technical Data

bowl - depth
bowl - width
grid
material
material code
overall depth
overall height
overall width
rear upstand
splash back
sump
sump basket
surface finish
tap ledge
type of mounting
waste hole position
waste hole projection
waste size

360 mm
360 mm
optional
mineral material
Miranit
498 mm
414 mm
469 mm
no
no
no
no
coated
no
wall mounting
centre
270 mm
DN 100

Optional Accessories



KWC SIRIUS
Disposal sink

Modell-Linie: SIRIUS | SIRW511
Utility sinks | Cleaners sinks



SIRIUS bucket grating

2000101201
SIRX512

SIRIUS siphon cover

2000101202
SIRX514