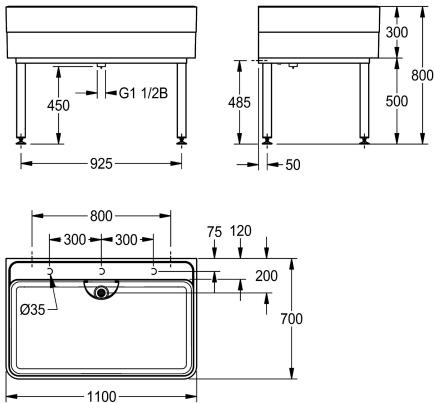


KWC SIRIUS
Workroom sink with tap ledge and stand pipe valve

Modell-Linie: SIRIUS | SIRW770
Utility sinks | Multi purpose sink



KWC-No.

2000102720
Length 1100 mm

2000102721
Length 2000 mm

overall width

1,100 mm

2,000 mm

Workroom sink made of MIRANIT resin-bonded mineral material with pore-free smooth surface (temperature-resistant up to 80 °C). Basin with integrated tap landing, without tap hole, with marking for drilling holes on the underside of the tap landing. Large inner radii, bottom of basin with 2° slope. Alpine white colour. Stand pipe valve DN 40 x 200 mm and protective strainer (removable) made of

stainless steel. Welded substructure frame, powder-coated in basin colour, adjustable base feet. Mounting material included.

Dimensions 1100 x 300/800 x 700 mm (W x H x D)
Bowl dimensions 1060 x 283 x 555 mm (W x H x D)

Technical Data

bowl - bowl height
bowl finish
bowl - depth
bowl - width
brushes
drainer or storage
grid
material
material code
number of waste holes
outlet size
overall depth
overall height
overall width
overflow
rear upstand
wash riffle
spillway
splash back
sump
sump basket
surface finish
tap ledge

283 mm
high polished
555 mm
1,060 mm
without brushes
no
no
mineral material
Miranit
1
DN 40
700 mm
800 mm
1,100 mm
standpipe overflow
no
no
no
no
no
coated
yes



KWC SIRIUS
Workroom sink with tap ledge and stand pipe valve

Modell-Linie: SIRIUS | SIRW770
Utility sinks | Multi purpose sink

type of mounting	wall and floor mounting
type of utility sink	cleaner sink
type of waste kit	standpipe strainer
upper edge of basin height	800 mm
waste hole position	centre back
waste hole projection	200 mm
waste kit included	yes
waste size	DN 40

Optional Accessories



SIRIUS sludge trap sink

2000102726
SIRW759
