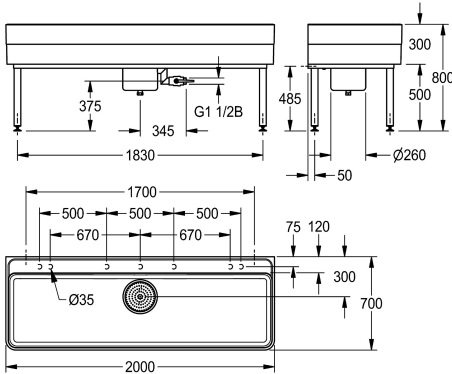


KWC SIRIUS
Workroom sink

Modell-Linie: SIRIUS | SIRW773
Utility sinks | Multi purpose sink



KWC-No.

2000102722
Dimensions 1100 x 300/800 x 700 mm (W x H x D)

2000102723
Length 2000 mm

overall width

1,100 mm

2,000 mm

Workroom sink made of MIRANIT resin-bonded mineral material with pore-free smooth surface (temperature-resistant up to 80 °C). Basin with integrated tap landing, without tap hole, with marking for drilling holes on the underside of the tap landing. Large inner radii, bottom of basin with 2° slope. Alpine white colour. Drain with under-screwed waste unit including removable sludge bucket, DN 40 overflow at waste unit and DN 25 waste outlet spigot made of

stainless steel. Waste unit with DN 40 ball cock completely fitted with tubes. Waste unit rotatable by 90°. Welded substructure frame, powder-coated in basin colour, adjustable base feet. Mounting material included.

Dimensions 2000 x 300/800 x 700 mm (W x H x D)
Bowl dimensions 1960 x 283 x 555 mm (W x H x D)

Technical Data

bowl - bowl height	
bowl finish	
bowl - depth	
bowl - width	
brushes	
drainer or storage	
grid	
material	
material code	
number of waste holes	
overall depth	
overall height	
overall width	
overflow	
rear upstand	
wash riffle	
spillway	
splash back	
sump	
sump basket	
surface finish	
tap ledge	

283 mm
high polished
555 mm
1,960 mm
Without brushes
No
No
mineral material
Miranit
1
700 mm
800 mm
2,000 mm
No
No
No
No
Yes
included
coated
Yes



KWC SIRIUS
Workroom sink

Modell-Linie: SIRIUS | SIRW773
Utility sinks | Multi purpose sink

type of mounting	wall and floor mounting
type of utility sink	cleaner sink
upper edge of basin height	800 mm
waste hole position	centre back
waste hole projection	300 mm