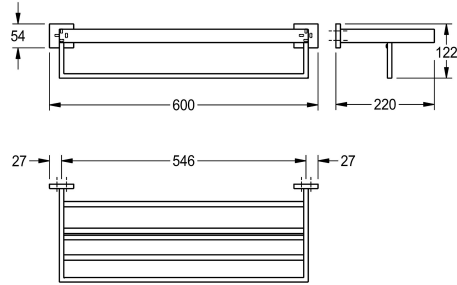
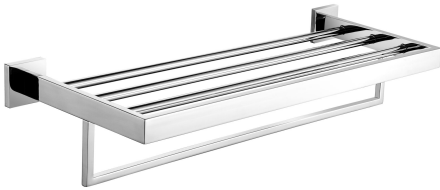


KWC CUBUS Double towel rack

Modell-Linie: CUBUS | CUBX012HP
Accessoires Hotel & Residential | Towel & rob holder Hotel



KWC-No.

2000106361

Surface high polished Dimensions 600 x 54 x 220 mm (W x H x D)

2000106360

Surface satin finished

surface finish

high polished

satin finished

Double towel rack in combination of towel shelf and rail for wall mounting, 304 stainless steel, square covers with drilled hole on bottom for fixation, includes stainless steel screws and dowels.

Surface high polished
Dimensions 600 x 122 x 220 mm (W x H x D)

Technical Data

| | |
|------------------|--------------------------------|
| material | stainless steel |
| material code | 1.4301 Chrome Nickel steel V2A |
| overall depth | 220 mm |
| overall height | 122 mm |
| overall width | 600 mm |
| surface finish | high polished |
| type of fixing | screw |
| type of mounting | wall mounting |

| | |
|------------------|--------------------------------|
| material | stainless steel |
| material code | 1.4301 Chrome Nickel steel V2A |
| overall depth | 220 mm |
| overall height | 122 mm |
| overall width | 600 mm |
| surface finish | high polished |
| type of fixing | screw |
| type of mounting | wall mounting |