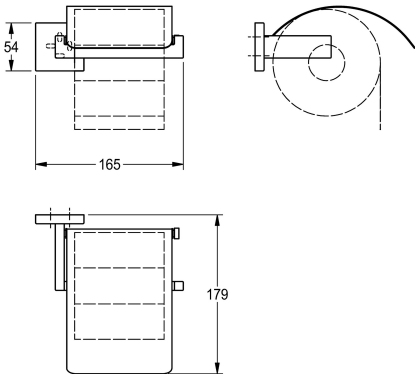




**KWC CUBUS**  
Toilet roll holder

**Modell-Linie: CUBUS | CUBX111HP**  
Accessoires Hotel & Residential | WC roll holder Hotel & Res.



**KWC-No.**

**2000106363**

Surface high polished Dimensions 165 x 54 x 179 mm (W x H x D)

Toilet roll holder for wall mounting, 304 stainless steel, for 1 roll with max. diameter 130 mm, stainless steel folding cover, square cover with drilled hole on bottom for fixation, includes stainless steel screws and dowels.

**surface finish**

high polished

Surface high polished  
Dimensions 165 x 54 x 179 mm (W x H x D)

**Technical Data**

filling quantity
lock
material
material code
overall depth
overall height
overall width
spindle
surface finish
type of fixing
type of mounting

1
no lock
stainless steel
1.4301 Chrome Nickel steel V2A
179 mm
54 mm
165 mm
No
high polished
screw
wall mounting