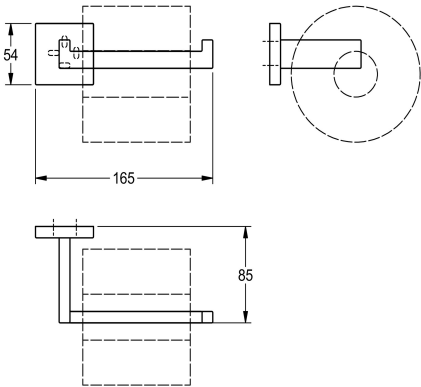




**KWC CUBUS**  
Replacement toilet roll holder

**Modell-Linie: CUBUS | CUBX211HP**  
Accessoires Hotel & Residential | WC roll holder Hotel & Res.



| KWC-No.                                                       |
|---------------------------------------------------------------|
| 2000106365                                                    |
| Surface high polished Dimensions 165 x 54 x 85 mm (W x H x D) |

Spare toilet roll holder for wall mounting, 304 stainless steel, square covers with drilled hole on bottom for fixation, includes stainless steel screws and dowels.

| surface finish |
|----------------|
| high polished  |

Surface high polished  
Dimensions 165 x 54 x 85 mm (W x H x D)

| Technical Data   |
|------------------|
| filling quantity |
| lock             |
| material         |
| material code    |
| overall depth    |
| overall height   |
| overall width    |
| spindle          |
| surface finish   |
| type of fixing   |
| type of mounting |

|                                |
|--------------------------------|
| 1                              |
| no lock                        |
| stainless steel                |
| 1.4301 Chrome Nickel steel V2A |
| 85 mm                          |
| 54 mm                          |
| 165 mm                         |
| no                             |
| high polished                  |
| screw                          |
| wall mounting                  |