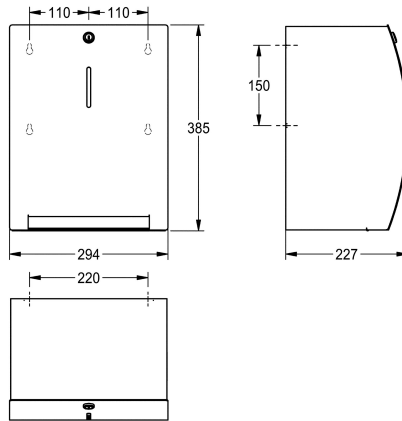


KWC STRATOS

Paper towel dispenser for wall mounting

Modell-Linie: STRATOS | STRX637
Accessories | Paper towel dispensers



KWC-No.

2000110533

Dimensions 294 x 385 x 227 mm (W x H x D)

Manual paper towel dispenser for wall mounting, stainless steel, surface satin finished, front with InoxPlus surface refinement for the reduction of finger marks and better cleaning characteristics (easy to clean), material thickness 1.5 mm, curved front with inspection window, cylinder lock with KWC standard key, capacity 1 paper roll, paper comes automatically out to pull with hand, maintenance

free mechanic, electrical connection or batteries are not required, easypaper roll change mechanism, for rolls with max. width 205 mm and max. diameter 200 mm, paper length is not adjustable - one length 260 mm, includes stainless steel screws and dowels.

Dimensions 294 x 385 x 227 mm (W x H x D)

Technical Data

maximum depth/diameter of cons

200 mm

maximum width of consumable

205 mm

filling quantity

1

filling quantity uom

rolls

lock

key-lock

material

stainless steel

material code

1.4301 Chrome Nickel steel V2A

material thickness

1.5 mm

overall depth

227 mm

overall height

385 mm

overall width

294 mm

surface finish

satin finished

surface treatment

InoxPlus (anti fingerprint)

type of consumable

paper roll

type of fixing

screw

type of mounting

wall mounting

type of operation

manual operation

INOX PLUS