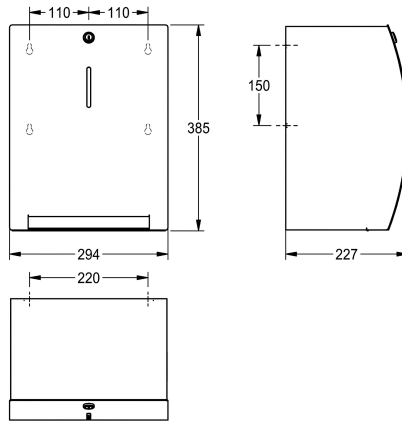


## KWC STRATOS

Paper towel dispenser for wall mounting

Modell-Linie: STRATOS | STRX637

Sanitetsutrustning | Pappershanddukhållare



### KWC-No.

**2000110533**

Dimensions 294 x 385 x 227 mm (W x H x D)

Manual paper towel dispenser for wall mounting, stainless steel, surface satin finished, front with InnoxPlus surface refinement for the reduction of finger marks and better cleaning characteristics (easy to clean), material thickness 1.5 mm, curved front with inspection window, cylinder lock with KWC standard key, capacity 1 paper roll, paper comes automatically out to pull with hand, maintenance

free mechanic, electrical connection or batteries are not required, easypaper roll change mechanism, for rolls with max. width 205 mm and max. diameter 200 mm, paper length is not adjustable - one length 260 mm, includes stainless steel screws and dowels.

Dimensions 294 x 385 x 227 mm (W x H x D)

### Technical Data

Maximal djup / diameter förbrukningsmaterial

200 mm

Maximal bredd på förbrukningsmaterial

205 mm

fyllnads kvantitet

1

Fyllnads kvantitet mått

Rullar

Lås

Nyckel lås

Material

Rostfritt stål

Materialkod

1.4301

Material tjocklek

1.5 mm

Övergripande djup

227 mm

Total höjd

385 mm

Total bredd

294 mm

Ytfinish

Satin yta

Ytbehandling

INOXPLUS

Typ av förbrukningsmaterial

Pappers rulle

Typ av fixering

Skruv

Typ av montering

Väggmontering

Typ av operation

Manull operation

**INOX  
PLUS**