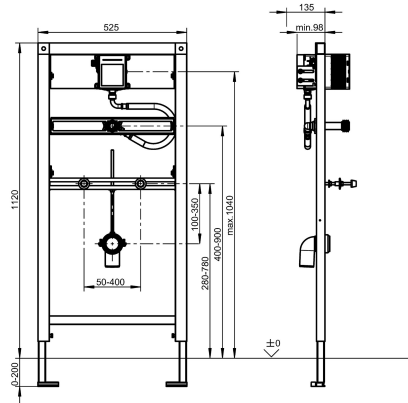
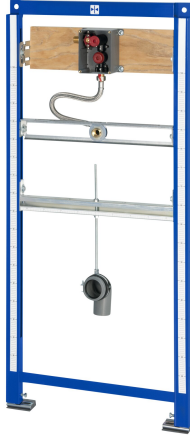


KWC AQUAFIX

Installation frame with flush valve for in-wall installation for ceramic urinals

Modell-Linie: AQUAFIX | AQFX0001

Installation frames | Installation units urinals



KWC-No.

2030020123

Installation frame for ceramic urinals, with urinal flush valve for in-wall installation

AQUAFIX installation frame for ceramic urinals, with ready assembled basic installation kit for in-wall urinal flush valves, manually operated or touch-free, opto-electronically controlled. Self-supporting, powder-coated, steel frame construction, TÜV tested, for installation of single units in dry-wall lining, adjustable height

fixing as well as tap connection and outlet mount, sound-insulated wall duct with flush connector, universal outlet bend 50 mm, urinal fixing bolts, building protection and fixing materials.

Dimensions 525 x 1120 mm (W x H)

Technical Data

| |
|------------------------------|
| application |
| barrier-free |
| Built-in fitting model |
| height adjustment |
| diameter nominal |
| material |
| minimum wall thickness |
| type of mixing |
| outlet size |
| overall depth |
| overall height |
| overall width |
| position of power connection |
| type |
| type of mounting |

| |
|-------------------------|
| urinals |
| No |
| Built-in section |
| 200 mm |
| DN 15 |
| steel |
| 135 mm |
| No |
| DN 50 |
| 135 mm |
| 1,120 mm |
| 525 mm |
| from side |
| installation element |
| wall and floor mounting |

Mandatory Accessories

KWC AQUAFIX

Installation frame with flush valve for in-wall installation for ceramic urinals

Modell-Linie: AQUAFIX | AQFX0001

Installation frames | Installation units urinals



F5E electronic urinal flush valve for in-wall installation

2030067743
F5EF3010

Optional Accessories



AQUAFIX wall bracket

2000100867
ZCMPX140
