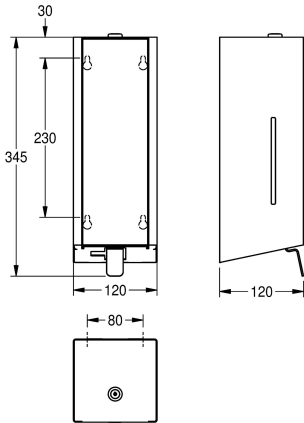




**KWC** EXOS.  
Soap dispenser for wall mounting

**Modell-Linie:** EXOS | EXOS618X  
Accessories | Soap dispensers



KWC-No.
2030022939
Front with InoxPlus surface refinement
2030022940
InoxPlus-coated main housing, black toughened safety glass front panel
2030025230
InoxPlus-coated main housing, white toughened safety glass front panel

Accent colour
stainless steel-look
black
white

Soap dispenser for wall mounting, stainless steel with satin finish, front and casing with InoxPlus surface refinement for the reduction of finger marks and better cleaning characteristics (easy to clean), material thickness 1.2 mm, inspection window on side, suitable for liquid soap and lotions, 800 ml refill tank, with stainless steel push

lever, easy to refill with soap tank on front panel, includes mounting materials.  
Dimensions 120 x 345 x 120 mm (W x H x D)

Technical Data
filling quantity
filling quantity uom
lock
material
material code
material thickness
overall depth
overall height
overall width
surface finish
surface treatment
type of consumable
type of fixing
type of mounting
type of operation
type of soap container
Accent colour
Basic colour

0.8
liter
key-lock
stainless steel
1.4301 Chrome Nickel steel V2A
1.2 mm
120 mm
345 mm
120 mm
satin finished
InoxPlus (anti fingerprint)
liquid soap
screw
wall mounting
manual operation
integrated refillable tank
stainless steel-look
stainless steel-look

**INOX  
PLUS**

**Optional Accessories**



**KWC** EXOS.  
Soap dispenser for wall mounting

Modell-Linie: **EXOS | EXOS618X**  
Accessories | Soap dispensers



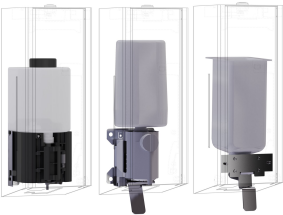
**EXOS. front with black safety glass panel for soap dispenser for wall mounting**

**2030022948**  
ZEXOS616B



**EXOS. front with white safety glass panel for soap dispenser for wall mounting**

**2030025238**  
ZEXOS616W



**EXOS. conversion kit for EXOS. soap dispenser**

**2030022954**  
ZEXOS625K



**EXOS. conversion kit for foam soap dispenser**

**2030022955**  
ZEXOS616K

**Consumables**



**Liquid soap**

**2030058103**  
SO1LP



**Liquid soap**

**2000057168**  
SO10L