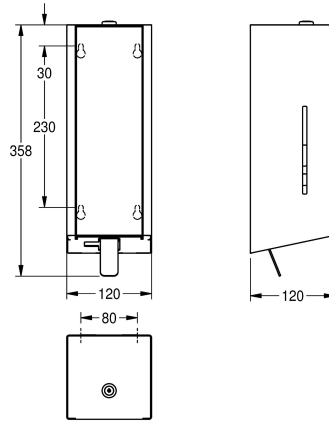


KWC EXOS.

Foam soap dispenser for wall mounting

Modell-Linie: EXOS | EXOS616X
Accessories | Soap dispensers



KWC-No.

2030022945

Front with InoxPlus surface refinement

2030022946

InoxPlus-coated main housing, black toughened safety glass front panel

2030025232

InoxPlus-coated main housing, white toughened safety glass front panel

Foam soap dispenser for wall mounting, stainless steel with satin finish, front and casing with InoxPlus surface refinement for the reduction of finger marks and better cleaning characteristics (easy to clean), material thickness 1.2 mm, inspection window on side,

with stainless steel pull lever, suitable for KWC foam soap, includes mounting materials and 650 ml KWC foam soap.

Dimensions 120 x 357 x 120 mm (W x H x D)

Technical Data

filling quantity

650

filling quantity uom

ml

lock

key-lock

material

stainless steel

material code

1.4301 Chrome Nickel steel V2A

material thickness

1.2 mm

overall depth

120 mm

overall height

357 mm

overall width

120 mm

surface finish

satin finished

surface treatment

InoxPlus (anti fingerprint)

type of consumable

foam soap

type of fixing

screw

type of mounting

wall mounting

type of operation

manual operation

type of soap container

single-use bag

**INOX
PLUS**

Optional Accessories

KWC EXOS.

Foam soap dispenser for wall mounting

Modell-Linie: EXOS | EXOS616X

Accessories | Soap dispensers



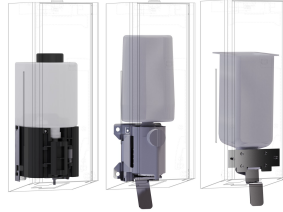
EXOS. front with black safety glass panel for soap dispenser for wall mounting

2030022948
ZEXOS616B



EXOS. front with white safety glass panel for soap dispenser for wall mounting

2030025238
ZEXOS616W



EXOS. conversion kit for EXOS. soap dispenser

2030022954
ZEXOS625K



EXOS. conversion kit for liquid soap dispenser

2030022956
ZEXOS618K

Consumables



Foam soap cartridge

2030058766
EXINX616FP