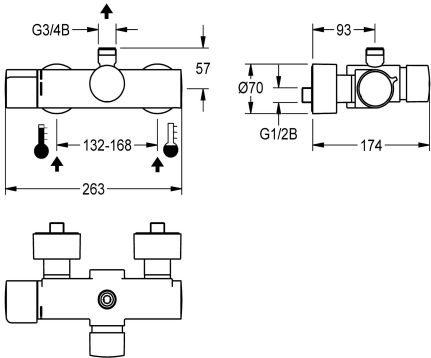


KWC F5S-Therm
Self-closing thermostatic wall-mounted mixer

Modell-Linie: F5S | F5ST2001
Showers | Self closing showers



KWC-No.
2030032978
2030036208
with automatic shower pipe draining

F5S-Therm self-closing thermostatic wall-mounted mixer DN 15 for wall mounting, for shower facilities. Hydraulically controlled, connects to hot and cold water. With a mechanism for an optional water hygiene unit for automatic water hygiene flushing and storage of statistical data. FRAMIC self-closing cartridge, hydraulically controlled, low-maintenance and stagnation-free, with ceramic disc technology, self-closing, flow pressure-independent due to medium-separated design. Stepless adjustment of flow

shower pipe draining
no
yes

duration. Thermostat with metal handle with adjustable and turn-proof temperature stop, with the option for a manual thermal disinfection. Scald-protected Safe-Touch housing with outlet on top. G 3/4 B, for installation of bent outlet or wall-mounted shower pipe. All-metal construction, high-polished chromium-plated brass. With adjustable and turn-proof connections with backflow preventer and strainers, completely covered with depth-adjustable screw rosettes.

Technical Data
additional connections
with backflow preventer
calculation flow rate cold wat
calculation flow rate hot water
circulation
compatible A3000 open
connection with pay water disp
with filter
adjustable flow time
functional principle
for hand shower
hygiene flushing
diameter nominal
inlet size
Locking mechanism
material fitting
maximum flow time
minimum flow pressure
minimum flow time
type of mixing
with rosettes/cover plate
protective shutdown

no
yes
0.15 l/s
0.15 l/s
no
no
not possible
yes
yes
hydraulic self-closing
no
prepared
DN 15
G 1/2 B
Top section, ceramic
brass-look
35 Seconds
1 bar
5 Seconds
with thermostat
yes
no



KWC F5S-Therm
Self-closing thermostatic wall-mounted mixer

Modell-Linie: F5S | F5ST2001
Showers | Self closing showers

shower pipe draining	no
sound insulation	no
surface finish fitting	chromed
surface treatment fitting	polished
temperature limit	yes
thermal disinfection	manual
type of mounting	wall mounting
type of operation	manual operation
type of shower	wall fitting
volume flow rate at 3 bar	0.3 l/s
water connection	S-connections
position of water connection	from backside
Accent colour	none
Basic colour	chrome-look (glossy)

Optional Accessories



Bent outlet

2030050434
ACXX2005



Bent outlet

2030050435
ACXX2006



Shower pipe

2030041522
ACSX2002



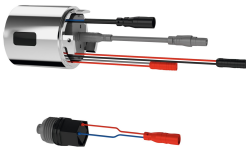
AQUAJET-Slimline shower head

2000103757
AQUA757



AQUAJET-Comfort shower head

2030021283
SHAC0008



Hygiene unit for F5S-Therm

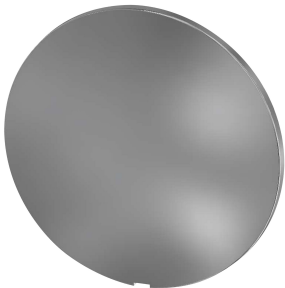
2030041162
ACST9001

Spare Parts



KWC F5S-Therm
Self-closing thermostatic wall-mounted mixer

Modell-Linie: **F5S | F5ST2001**
Showers | Self closing showers



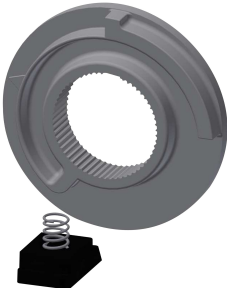
Cover

2030003258
EAQLT0002



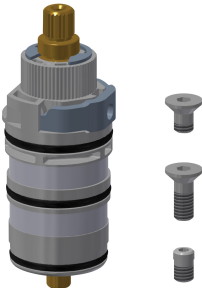
Temperature handle

2030050541
ASXT9004



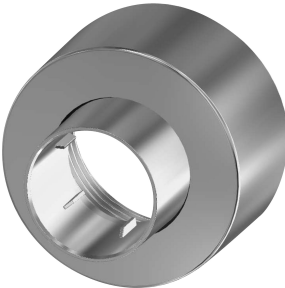
Temperature stop

2030003296
EAQLT0003



Thermocouple

2030003300
EAQLT0004



Screw rosette

2030046777
ASSX9003



Mounting set

2030003401
EAQLT0009



Plug chromed

2030053006
ASSX9004



Push cap

2030050542
ASST9001



Safety ring

2030048357
ASSX9003



FRAMIC Self-closing cartridge

2030046145
ASSX9001