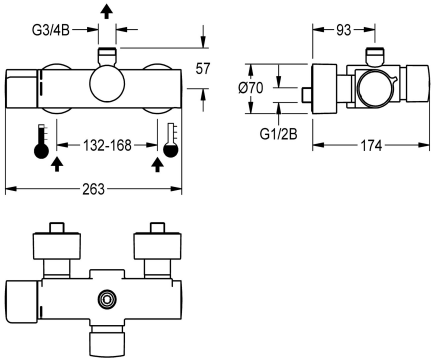


KWC F5S-Therm  
Self-closing thermostatic wall-mounted mixer

Modell-Linie: F5S | F5ST2001  
Showers | Self closing showers



KWC-No.

2030032978

2030036208

with automatic shower pipe draining

shower pipe draining

no

yes

F5S-Therm self-closing thermostatic wall-mounted mixer DN 15 for wall mounting, for shower facilities. Hydraulically controlled, connects to hot and cold water. With a mechanism for an optional water hygiene unit for automatic water hygiene flushing and storage of statistical data. FRAMIC self-closing cartridge, hydraulically controlled, low-maintenance and stagnation-free, with ceramic disc technology, self-closing, flow pressure-independent due to medium-separated design. Stepless adjustment of flow

duration. Thermostat with metal handle with adjustable and turn-proof temperature stop, with the option for a manual thermal disinfection. Scald-protected Safe-Touch housing with outlet on top. G 3/4 B, for installation of bent outlet or wall-mounted shower pipe. All-metal construction, high-polished chromium-plated brass. With adjustable and turn-proof connections with backflow preventer and strainers, completely covered with depth-adjustable screw rosettes.

Technical Data

additional connections	no
with backflow preventer	yes
calculation flow rate cold wat	0.15 l/s
calculation flow rate hot water	0.15 l/s
circulation	no
compatible A3000 open	no
connection with pay water disp	not possible
with filter	yes
adjustable flow time	yes
functional principle	hydraulic self-closing
for hand shower	no
hygiene flushing	prepared
diameter nominal	DN 15
inlet size	G 1/2 B
Locking mechanism	Top section, ceramic
material fitting	brass
maximum flow time	35 Seconds
minimum flow pressure	1 bar
minimum flow time	5 Seconds
type of mixing	with thermostat
with rosettes/cover plate	yes
protective shutdown	no

no
yes
0.15 l/s
0.15 l/s
no
no
not possible
yes
yes
hydraulic self-closing
no
prepared
DN 15
G 1/2 B
Top section, ceramic
brass
35 Seconds
1 bar
5 Seconds
with thermostat
yes
no



KWC F5S-Therm  
Self-closing thermostatic wall-mounted mixer

Modell-Linie: F5S | F5ST2001  
Showers | Self closing showers

shower pipe draining	no
sound insulation	no
surface finish fitting	chromed
surface treatment fitting	polished
temperature limit	yes
thermal disinfection	manual thermal disinfection
type of mounting	wall mounting
type of operation	manual operation
type of shower	wall fitting
volume flow rate at 3 bar	0.3 l/s
water connection	S-connections
position of water connection	from backside
Accent colour	none
Basic colour	chrome-look (glossy)

Optional Accessories



Bent outlet

2030050434  
ACXX2005



Bent outlet

2030050435  
ACXX2006



Shower pipe

2030041522  
ACSX2002



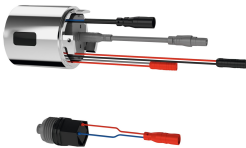
AQUAJET-Slimline shower head

2000103757  
AQUA757



AQUAJET-Comfort shower head

2030021283  
SHAC0008



Hygiene unit for F5S-Therm

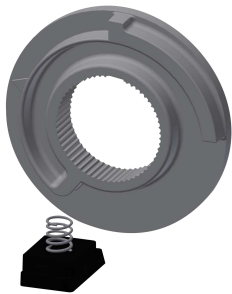
2030041162  
ACST9001

Spare Parts



**KWC** F5S-Therm  
Self-closing thermostatic wall-mounted mixer

Modell-Linie: **F5S | F5ST2001**  
Showers | Self closing showers



Temperature stop

**2030003296**  
EAQLT0003



Plug chromed

**2030053006**  
ASSX9004



Safety ring

**2030048357**  
ASSX9003



FRAMIC Self-closing cartridge

**2030046145**  
ASSX9001