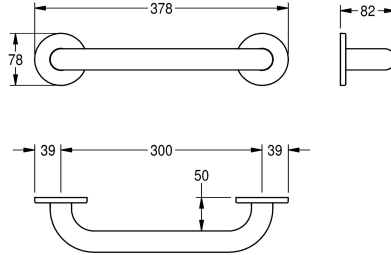


KWC CONTINA grab rail

Modell-Linie: **CONTINA | CNTX300W**
Grab rails | Grab rail



KWC-No.

2030033995
300 mm version

2030033978
450 mm version

2030032985
600 mm version

2030033997
750 mm version

2030033990
900 mm version

2030034502
1050 mm version

2030033994
1100 mm version

overall width

378 mm

528 mm

678 mm

828 mm

978 mm

1,128 mm

1,178 mm

Grab rail for wall mounting, stainless steel, surface satin finished, rough polishing for better surface feel, 32 mm pipe diameter, material thickness 1.2 mm, wall distance 82 mm, with two stainless steel covers for hidden mounting, includes stainless steel screws

and dowels.

Type 300 mm
Dimensions 378 x 78 x 82 mm (W x H x D)

Technical Data

| |
|-------------------------|
| back |
| bending angle |
| colour |
| number of fixing points |
| hidden fixing |
| hinged |
| material |
| material code |
| material thickness |
| overall depth |
| overall height |
| overall width |
| pipe diameter |
| surface finish |
| type of fixing |
| type of grab rail |

| |
|--------------------------------|
| No |
| 0 Degree |
| no colour |
| 2 |
| Yes |
| No |
| stainless steel |
| 1.4301 Chrome Nickel steel V2A |
| 1.2 mm |
| 82 mm |
| 78 mm |
| 378 mm |
| 32 mm |
| satin finished |
| screw |
| straight bar |

KWC CONTINA grab rail

Modell-Linie: CONTINA | CNTX300W
Grab rails | Grab rail

type of mounting

wall mounting
