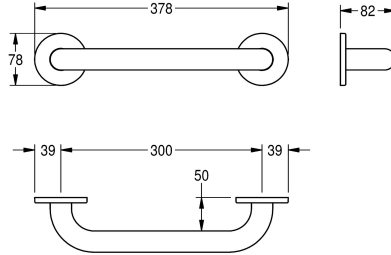


KWC CONTINA grab rail

Modell-Linie: **CONTINA | CNTX300W**
Grab rails | Grab rail



KWC-No.

2030033995
300 mm version

2030034493
400 mm version

2030033978
450 mm version

2030034496
500 mm version

2030032985
600 mm version

2030034000
700 mm version

2030033997
750 mm version

2030034498
800 mm version

2030033990
900 mm version

2030034501
1000 mm version

2030034502
1050 mm version

2030033994
1100 mm version

overall width

378 mm

528 mm

678 mm

828 mm

978 mm

1,128 mm

1,178 mm

Grab rail for wall mounting, stainless steel, surface satin finished, rough polishing for better surface feel, 32 mm pipe diameter, material thickness 1.2 mm, wall distance 82 mm, with two stainless steel covers for hidden mounting, includes stainless steel screws

and dowels.

Type 300 mm
Dimensions 378 x 78 x 82 mm (W x H x D)

Technical Data

back

no

bending angle

0 Degree

colour

no colour

number of fixing points

2

hidden fixing

yes

hinged

no

material

stainless steel

material code

1.4301 Chrome Nickel steel V2A

KWC

CONTINA grab rail

Modell-Linie: CONTINA | CNTX300W

Grab rails | Grab rail

material thickness	1.2 mm
overall depth	82 mm
overall height	78 mm
overall width	378 mm
pipe diameter	32 mm
surface finish	satin finished
type of fixing	screw
type of grab rail	straight bar
type of mounting	wall mounting