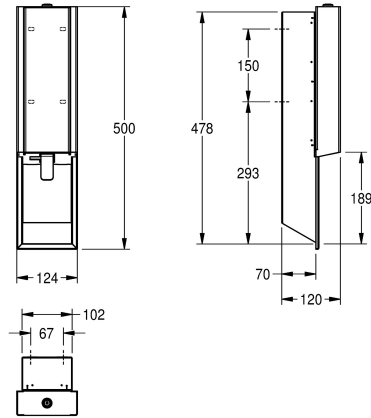


## KWC EXOS.

### Foam soap dispenser for recessed mounting

Modell-Linie: EXOS | EXOS616EB  
Accessories | Soap dispensers



#### KWC-No.

**2030034634**

Front with InoxPlus surface refinement

**2030034636**

InoxPlus-coated main housing, black toughened safety glass front panel

**2030034666**

InoxPlus-coated main housing, white toughened safety glass front panel

black

white

Foam soap dispenser for recessed mounting, stainless steel with satin finish, black safety glass front panel, casing with InoxPlus surface refinement for the reduction of finger marks and better cleaning characteristics (easy to clean), material thickness 1.2 mm,

with stainless steel pull lever, suitable for KWC foam soap, includes mounting materials and 650 ml KWC foam soap.

Dimensions 124 x 500 x 120 mm (W x H x D)

#### Technical Data

filling quantity

650

filling quantity uom

ml

lock

key-lock

material

stainless steel

material code

1.4301 Chrome Nickel steel V2A

material thickness

1.2 mm

overall depth

120 mm

overall height

500 mm

overall width

124 mm

surface finish

satin finished

surface treatment

InoxPlus (anti fingerprint)

type of consumable

foam soap

type of fixing

screw

type of mounting

recessed mounting

type of operation

manual operation

type of soap container

single-use bag

Accent colour

black

#### Optional Accessories

## KWC EXOS.

Foam soap dispenser for recessed mounting

Modell-Linie: EXOS | EXOS616EB

Accessories | Soap dispensers



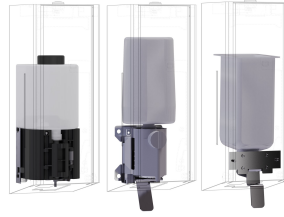
**EXOS. Stainless steel front for soap dispenser for recessed mounting**

**2030034653**  
ZEXOS616E



**EXOS. front with white safety glass panel for soap dispenser for recessed mounting**

**2030034710**  
ZEXOS616EW



**EXOS. conversion kit for EXOS. soap dispenser**

**2030022954**  
ZEXOS625K



**EXOS. conversion kit for liquid soap dispenser**

**2030022956**  
ZEXOS618K

## Consumables



**Foam soap cartridge**

**2030058766**  
EXINX616FP