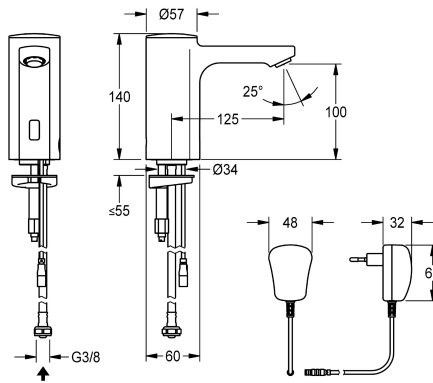


## KWC F5E

Electronic pillar tap with plug-in power supply unit

Modell-Linie: F5E | F5EV1002  
Taps | Electronic taps



### KWC-No.

2030035330

2030039436

with flow regulator 3.0 l/min

### volume flow rate at 3 bar

0.08 l/s

0.05 l/s

F5E pillar tap DN 15 for sanitary facilities, opto-electronically controlled. For connection to pre-mixed hot or cold water via hose and strainer. Control electronics, solenoid valve cartridge and sensor in all-metal housing, high-polished chromium-plated brass. Anti-theft aerator, design SLIM, with integrated flow regulator 5.0 l/min.

Activated water hygiene flushing 24 hours after last activation, safety switch-off with continuous reflection and saving of statistical data. With option for parameterization and communication via optional, bidirectional remote control. With 100 - 240 V AC plug-in power supply unit.

### Technical Data

with backflow preventer

calculation flow rate cold wat

compatible A3000 open

default automatic hygiene flus

depressurised

with filter

functional principle

hygiene flushing

diameter nominal

inlet size

Locking mechanism

material fitting

minimum flow pressure

type of mixing

Parameterization

Pop-up waste set

power supply connection

position of power connection

power consumption

Type of power supply

protective system IP

with rosettes/cover plate

protective shutdown

sound insulation

no

0.1 l/s

no

24h after the last activity

no

yes

electronic self-closing

yes

DN 15

G 3/8

Top section, non-ceramic

brass

1 bar

no

remote control

no

100 - 240 V AC

from bottom

1.5 Voltampere

Transformer

IP59K

no

yes

no



## KWC F5E

Electronic pillar tap with plug-in power supply unit

**Modell-Linie: F5E | F5EV1002**

Taps | Electronic taps

|                               |                        |
|-------------------------------|------------------------|
| Spout                         | fixed                  |
| spout projection              | 125 mm                 |
| surface finish fitting        | chromed                |
| surface treatment fitting     | polished               |
| temperature limit             | no                     |
| thermal disinfection          | no                     |
| with transformer/power supply | yes                    |
| type of mounting              | tap hole               |
| type of operation             | sensor operation       |
| type of sensor                | opto-electronic sensor |
| type of tap                   | pillar tap             |
| volume flow rate at 3 bar     | 0.08 l/s               |
| water connection              | hose (gland nut)       |
| Accent colour                 | none                   |
| Basic colour                  | chrome-look (glossy)   |

### Optional Accessories



**Bidirectional remote control for electronic fittings F3 and F5**

**2030036654**  
ACEX9005



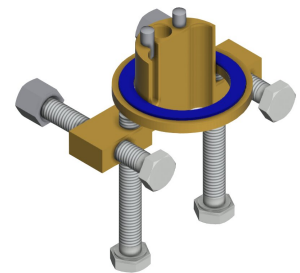
**2-button remote control for fittings F3 and F5**

**2030036849**  
ACEX9004



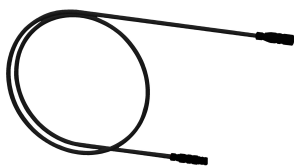
**Socket**

**2030040334**  
ACEX1001



**Anti-twist protection for F5S**

**2030035383**  
ACXX1001



**Extension cable 5 m**

**2030043814**  
ACEX9010



**PURETHERM under-table thermostat**

**2030012758**  
PURE0031



**5.0 l/min aerator, angle-adjustable**

**2030041326**  
ACXX1002



**3.0 l/min. aerator**

**2030041424**  
ASXX1008

## KWC F5E

Electronic pillar tap with plug-in power supply unit

Modell-Linie: F5E | F5EV1002

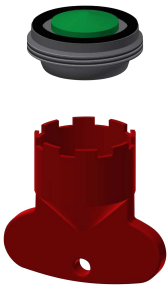
Taps | Electronic taps



### Aerator 1.8 l/min

2030041442  
ACXX1005

### Spare Parts



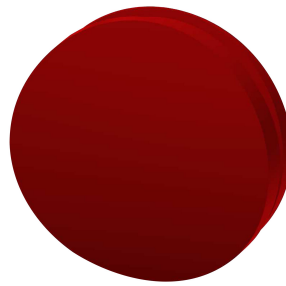
### Aerator 5.0 l/min

2030041011  
ASXX1004



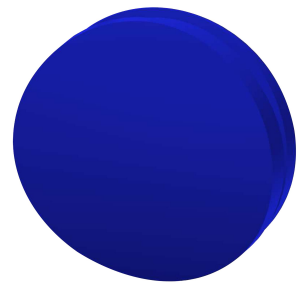
### Cap

2030041558  
ASEX1007



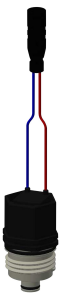
### Plug red

2030041951  
ASEX1009



### Plug blue

2030041952  
ASEX1010



### Solenoid valve cartridge

2030045522  
ACXX9002



### Hose

2030041311  
ASXX1005



### Quick-action fastener

2030043596  
ASEX1013



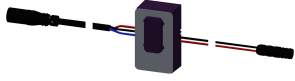
### Water way

2030041949  
ASEX1008

## KWC F5E

Electronic pillar tap with plug-in power supply unit

Modell-Linie: F5E | F5EV1002  
Taps | Electronic taps



### Sensor, ID 01/00004

**2030041458**  
ASEX1005

### Plug-in power supply unit

**2030039823**  
ACEX9002

### Mounting key

**2030041329**  
ACXX1003