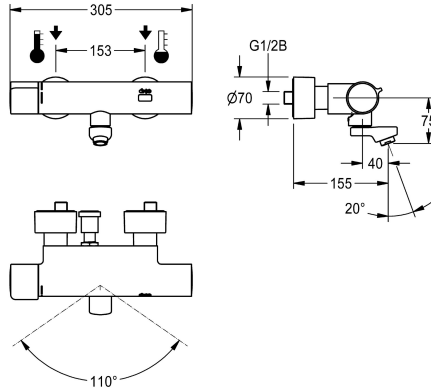


KWC F5E-Therm

Electronic thermostat wall-mounted mixer for separate power supply

Modell-Linie: F5E | F5ET1004

Taps | Electronic taps



KWC-No.

2030036211

2030036210

Projection 155 mm

2030036212

Projection 275 mm

2030039530

with projection 155 mm and pre-installed disinfection unit

2030039538

with projection 215 mm and pre-installed disinfection unit

2030039539

with projection 275 mm and pre-installed disinfection unit

spout projection

215 mm

155 mm

275 mm

155 mm

215 mm

275 mm

thermal disinfection

yes

yes

yes

automatic thermal disinfection

automatic thermal disinfection

automatic thermal disinfection

F5E-Therm thermostatic mixer DN 15 for wall mounting with lockable swivelling spout, for sanitary facilities. Opto-electronically controlled, triggered via hand movement. Thermostat with metal handle with adjustable and turn-proof temperature stop. With option for thermal disinfection, manually or automatically via optional disinfection unit. For connection to hot and cold water. Control electronics, solenoid valve cartridge and sensor in scald-protected safe-touch housing, high-polished chromium-plated brass. Laminar jet controller with integrated flow regulator 6.0 l/min.

With adjustable and lockable connections with backflow preventer and strainers, completely covered with depth-adjustable screw rosettes. Projection 155 mm. Activated water hygiene flushing 24 hours after last activation, safety switch-off with continuous reflection and saving of statistical data. With option for parameterization and communication via optional, bidirectional remote control. Separate power supply via power supply unit 6.75 V / 12 V DC or AQUA 3000 open system accessories.

Technical Data

with backflow preventer

yes

calculation flow rate cold wat

0.07 l/s

calculation flow rate hot wate

0.07 l/s

compatible A3000 open

yes

default automatic hygiene flus

24h after the last activity

default flow time

10 Seconds

depressurised

no

with filter

yes

adjustable flow time

yes

functional principle

electronic self-closing

hygiene flushing

yes

diameter nominal

DN 15

inlet size

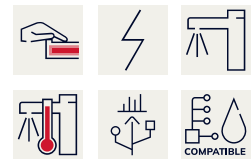
G 1/2 B

Locking mechanism

Top section, non-ceramic

material fitting

brass-look



KWC F5E-Therm

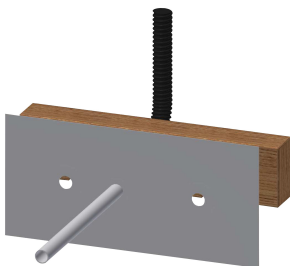
Electronic thermostat wall-mounted mixer for separate power supply

Modell-Linie: F5E | F5ET1004

Taps | Electronic taps

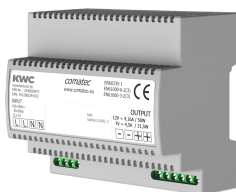
maximum flow time	255 Seconds
minimum flow pressure	1 bar
minimum flow time	1 Seconds
type of mixing	with thermostat
Parameterization	remote control
Pop-up waste set	no
power supply connection	6,75 / 12 VDC / A3000 open
position of power connection	from backside
power consumption	1.5 Voltampere
Type of power supply	Transformer
protective system IP	IP59K
with rosettes/cover plate	yes
protective shutdown	yes
sound insulation	no
Spout	rotating, bottom
spout projection	155 mm
surface finish fitting	chromed
surface treatment fitting	polished
temperature limit	yes
thermal disinfection	yes
with transformer/power supply	no
type of mounting	wall mounting
type of operation	sensor operation
type of sensor	opto-electronic sensor
type of tap	bib tap
Volume flow rate bypass PWH	0.05 l/s
volume flow rate at 3 bar	0.1 l/s
water connection	S-unions
Accent colour	none
Basic colour	chrome-look (glossy)

Mandatory Accessories



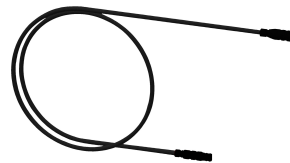
Mounting bar for F5 wall-mounted mixers

2030071303
F5BTX002



Power supply unit

2030039477
ACEX9001



Extension cable 5 m

2030043814
ACEX9010

KWC F5E-Therm

Electronic thermostat wall-mounted mixer for separate power supply

Modell-Linie: F5E | F5ET1004

Taps | Electronic taps

Optional Accessories



Bidirectional remote control for electronic fittings F3 and F5

2030036654
ACEX9005



2-button remote control for fittings F3 and F5

2030036849
ACEX9004



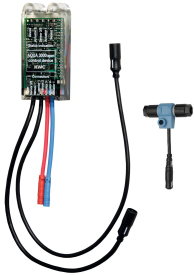
Thermal disinfection unit for F5E-Therm thermostatic wall mixers

2030039541
ACET9001



Theft-proof housing for aerator

2000104778
ZTAPS0005



Electronic module for wash basin taps F5

2030041914
ACET1001

Spare Parts



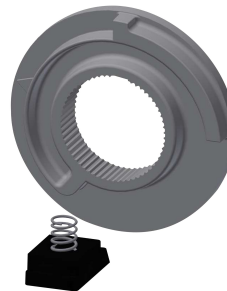
Cover

2030003258
EAQLT0002



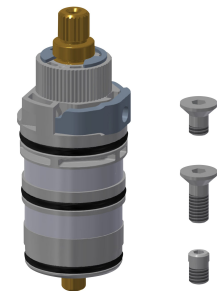
Temperature handle

2030047082
ASXT9003



Temperature stop

2030003296
EAQLT0003



Thermocouple

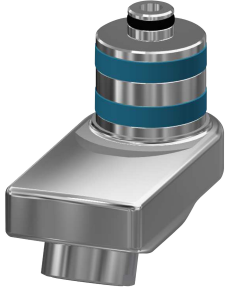
2030003300
EAQLT0004

KWC F5E-Therm

Electronic thermostat wall-mounted mixer for separate power supply

Modell-Linie: F5E | F5ET1004

Taps | Electronic taps



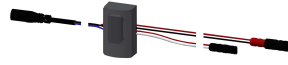
Swivel spout, 40 mm

2030035159
ASXX1003



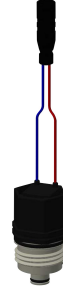
Laminar jet regulator

2030012352
ETAPS0037



Sensor, ID 02/00002

2030041459
ASXT9001



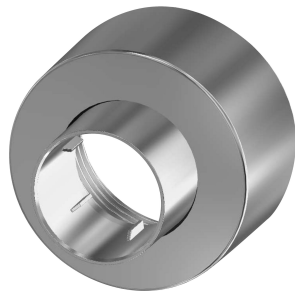
Solenoid valve cartridge

2030045522
ACXX9002



Mounting set

2030003401
EAQLT0009



Screw rosette

2030046777
ASXX9003



Hexagonal socket wrench

2030047722
ACEX9011