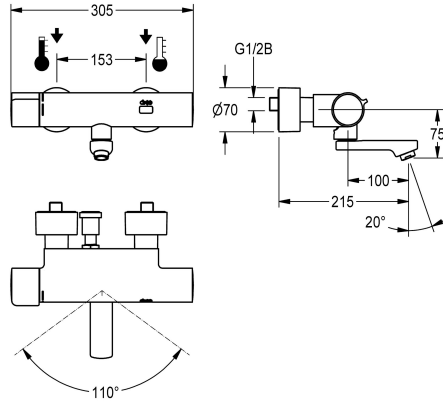


KWC F5E-Therm

Electronic thermostatic wall-mounted mixer for separate power supply

Modell-Linie: F5E | F5ET1005

Taps | Electronic taps



KWC-No.

2030036211

2030036210

Projection 155 mm

2030036212

Projection 275 mm

2030039530

with projection 155 mm and pre-installed disinfection unit

2030039538

with projection 215 mm and pre-installed disinfection unit

2030039539

with projection 275 mm and pre-installed disinfection unit

spout projection

215 mm

155 mm

275 mm

155 mm

215 mm

275 mm

thermal disinfection

Yes

Yes

Yes

automatic thermal disinfection

automatic thermal disinfection

automatic thermal disinfection

F5E-Therm thermostatic mixer DN 15 for wall mounting with lockable swivelling spout, for sanitary facilities. Opto-electronically controlled, triggered via hand movement. Thermostat with metal handle with adjustable and turn-proof temperature stop. With option for thermal disinfection, manually or automatically via optional disinfection unit. For connection to hot and cold water. Control electronics, solenoid valve cartridge and sensor in scald-protected safe-touch housing, high-polished chromium-plated brass. Laminar jet controller with integrated flow regulator 6.0 l/min.

With adjustable and lockable connections with backflow preventer and strainers, completely covered with depth-adjustable screw rosettes. Projection 215 mm. Activated water hygiene flushing 24 hours after last activation, safety switch-off with continuous reflection and saving of statistical data. With option for parameterization and communication via optional, bidirectional remote control. Separate power supply via power supply unit 6.75 V / 12 V DC or AQUA 3000 open system accessories.

Technical Data

with backflow preventer

Yes

calculation flow rate cold water

0.07 l/s

calculation flow rate hot water

0.07 l/s

compatible A3000 open

Yes

default automatic hygiene flush

24h after the last activity

default flow time

10 Seconds

depressurised

No

with filter

Yes

adjustable flow time

Yes

functional principle

electronic self-closing

hygiene flushing

Yes

diameter nominal

DN 15

inlet size

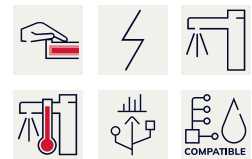
G 1/2 B

Locking mechanism

Top section, non-ceramic

material fitting

brass-look



KWC F5E-Therm

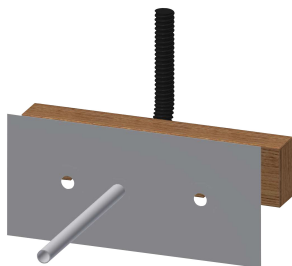
Electronic thermostatic wall-mounted mixer for separate power supply

Modell-Linie: F5E | F5ET1005

Taps | Electronic taps

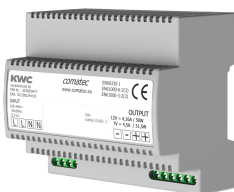
| | |
|-------------------------------|----------------------------|
| maximum flow time | 255 Seconds |
| minimum flow pressure | 1 bar |
| minimum flow time | 1 Seconds |
| type of mixing | with thermostat |
| Parameterization | remote control |
| Pop-up waste set | No |
| power supply connection | 6,75 / 12 VDC / A3000 open |
| position of power connection | from backside |
| power consumption | 1.5 Voltampere |
| Type of power supply | Transformer |
| protective system IP | IP59K |
| with rosettes/cover plate | Yes |
| protective shutdown | Yes |
| sound insulation | No |
| Spout | rotating, bottom |
| spout projection | 215 mm |
| surface finish fitting | chromed |
| surface treatment fitting | polished |
| temperature limit | Yes |
| thermal disinfection | Yes |
| with transformer/power supply | No |
| type of mounting | wall mounting |
| type of operation | sensor operation |
| type of sensor | opto-electronic sensor |
| type of tap | bib tap |
| Volume flow rate bypass PWH | 0.05 l/s |
| volume flow rate at 3 bar | 0.1 l/s |
| water connection | S-unions |
| Accent colour | none |
| Basic colour | chrome-look (glossy) |

Mandatory Accessories



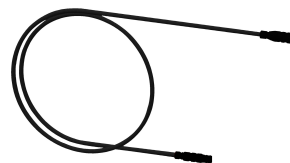
Mounting bar for F5 wall-mounted mixers

2030071303
F5BTX002



Power supply unit

2030039477
ACEX9001



Extension cable 5 m

2030043814
ACEX9010

KWC F5E-Therm

Electronic thermostatic wall-mounted mixer for separate power supply

Modell-Linie: F5E | F5ET1005

Taps | Electronic taps

Optional Accessories



Bidirectional remote control for electronic fittings F3 and F5

2030036654
ACEX9005



2-button remote control for fittings F3 and F5

2030036849
ACEX9004



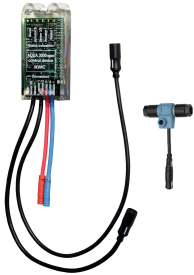
Thermal disinfection unit for F5E-Therm thermostatic wall mixers

2030039541
ACET9001



Theft-proof housing for aerator

2000104778
ZTAPS0005



Electronic module for wash basin taps F5

2030041914
ACET1001

Spare Parts



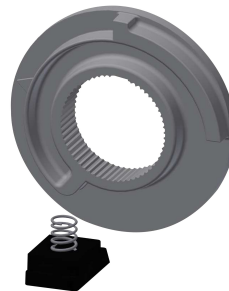
Cover

2030003258
EAQLT0002



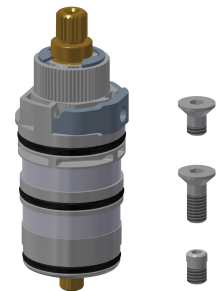
Temperature handle

2030047082
ASXT9003



Temperature stop

2030003296
EAQLT0003



Thermocouple

2030003300
EAQLT0004

KWC F5E-Therm

Electronic thermostatic wall-mounted mixer for separate power supply

Modell-Linie: F5E | F5ET1005

Taps | Electronic taps



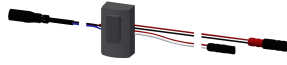
Swivel spout, 100 mm

2030032671
ASXX1001



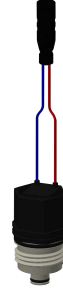
Laminar jet regulator

2030012352
ETAPS0037



Sensor, ID 02/00002

2030041459
ASXT9001



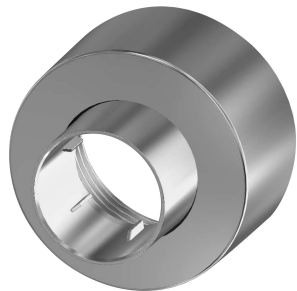
Solenoid valve cartridge

2030045522
ACXX9002



Mounting set

2030003401
EAQLT0009



Screw rosette

2030046777
ASXX9003



Hexagonal socket wrench

2030047722
ACEX9011