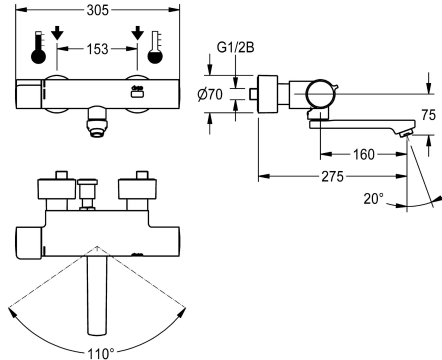


## KWC F5E-Therm

Electronic thermostatic wall-mounted mixer for separate power supply

Modell-Linie: F5E | F5ET1006  
Taps | Electronic taps



KWC-No.
<b>2030036211</b>
<b>2030036210</b> Projection 155 mm
<b>2030036212</b> Projection 275 mm
<b>2030039530</b> with projection 155 mm and pre-installed disinfection unit
<b>2030039538</b> with projection 215 mm and pre-installed disinfection unit
<b>2030039539</b> with projection 275 mm and pre-installed disinfection unit

spout projection
215 mm
155 mm
275 mm
155 mm
215 mm
275 mm

thermal disinfection
yes
yes
yes
automatic thermal disinfection
automatic thermal disinfection
automatic thermal disinfection

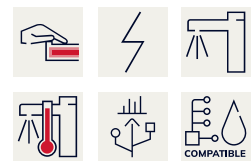
F5E-Therm thermostat wall mixer DN 15 for wall mounting with lockable swivelling spout, for sanitary facilities. Opto-electronically controlled, triggered via hand movement. Thermostat with metal handle with adjustable and turn-proof temperature stop. With option for thermal disinfection, manually or automatically via optional disinfection unit. For connection to hot and cold water. Control electronics, solenoid valve cartridge and sensor in scald-protected safe-touch housing, high-polished chromium-plated brass. Laminar jet controller with integrated flow regulator 6.0 l/min.

With adjustable and lockable connections with backflow preventer and strainers, completely covered with depth-adjustable screw rosettes. Projection 275 mm. Activated water hygiene flushing 24 hours after last activation, safety switch-off with continuous reflection and saving of statistical data. With option for parameterization and communication via optional, bidirectional remote control. Separate power supply via power supply unit 6.75 V / 12 V DC or AQUA 3000 open system accessories.

### Technical Data

with backflow preventer
calculation flow rate cold water
calculation flow rate hot water
compatible A3000 open
default automatic hygiene flush
default flow time
depressurised
with filter
adjustable flow time
functional principle
hygiene flushing
diameter nominal
inlet size
Locking mechanism
material fitting

yes
0.07 l/s
0.07 l/s
yes
24h after the last activity
10 Seconds
no
yes
yes
electronic self-closing
yes
DN 15
G 1/2 B
Top section, non-ceramic
brass-look



## KWC F5E-Therm

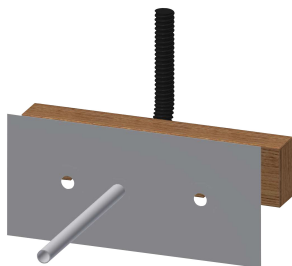
Electronic thermostatic wall-mounted mixer for separate power supply

Modell-Linie: F5E | F5ET1006

Taps | Electronic taps

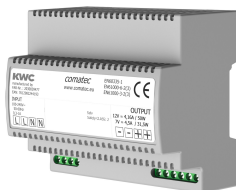
maximum flow time	255 Seconds
minimum flow pressure	1 bar
minimum flow time	1 Seconds
type of mixing	with thermostat
Parameterization	remote control
Pop-up waste set	no
power supply connection	6,75 / 12 VDC / A3000 open
position of power connection	from backside
power consumption	1.5 Voltampere
Type of power supply	Transformer
protective system IP	IP59K
with rosettes/cover plate	yes
protective shutdown	yes
sound insulation	no
Spout	rotating, bottom
spout projection	275 mm
surface finish fitting	chromed
surface treatment fitting	polished
temperature limit	yes
thermal disinfection	yes
with transformer/power supply	no
type of mounting	wall mounting
type of operation	sensor operation
type of sensor	opto-electronic sensor
type of tap	bib tap
Volume flow rate bypass PWH	0.05 l/s
volume flow rate at 3 bar	0.1 l/s
water connection	S-unions
Accent colour	none
Basic colour	chrome-look (glossy)

### Mandatory Accessories



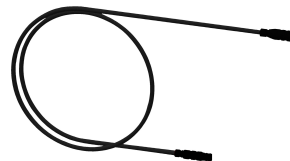
Mounting bar for F5 wall-mounted mixers

**2030071303**  
F5BTX002



Power supply unit

**2030039477**  
ACEX9001



Extension cable 5 m

**2030043814**  
ACEX9010

## KWC F5E-Therm

Electronic thermostatic wall-mounted mixer for separate power supply

Modell-Linie: F5E | F5ET1006

Taps | Electronic taps

### Optional Accessories



Bidirectional remote control for electronic fittings F3 and F5

**2030036654**  
ACEX9005



2-button remote control for fittings F3 and F5

**2030036849**  
ACEX9004



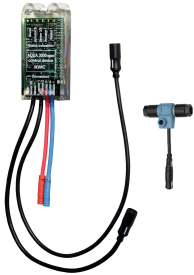
Thermal disinfection unit for F5E-Therm thermostatic wall mixers

**2030039541**  
ACET9001



Theft-proof housing for aerator

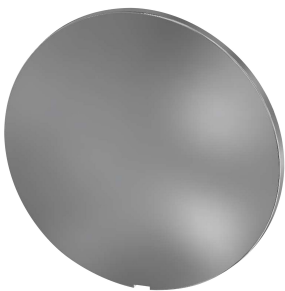
**2000104778**  
ZTAPS0005



Electronic module for wash basin taps F5

**2030041914**  
ACET1001

### Spare Parts



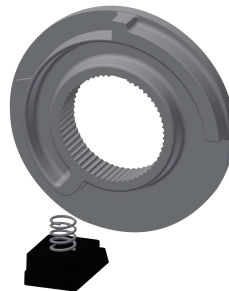
Cover

**2030003258**  
EAQLT0002



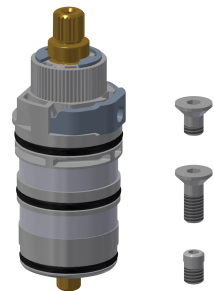
Temperature handle

**2030047082**  
ASXT9003



Temperature stop

**2030003296**  
EAQLT0003



Thermocouple

**2030003300**  
EAQLT0004

## KWC F5E-Therm

Electronic thermostatic wall-mounted mixer for separate power supply

Modell-Linie: F5E | F5ET1006

Taps | Electronic taps



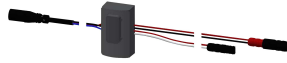
Swivel spout, 160 mm

**2030032815**  
ASXX1002



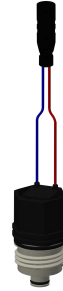
Laminar jet regulator

**2030012352**  
ETAPS0037



Sensor, ID 02/00002

**2030041459**  
ASXT9001



Solenoid valve cartridge

**2030045522**  
ACXX9002



Mounting set

**2030003401**  
EAQLT0009



Screw rosette

**2030046777**  
ASXX9003



Hexagonal socket wrench

**2030047722**  
ACEX9011