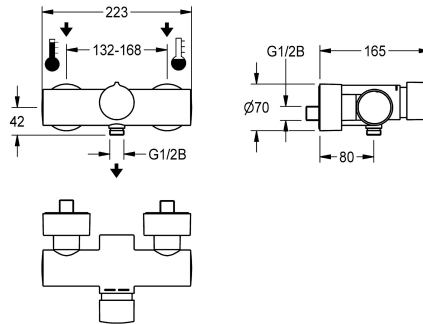


KWC

F5S-Mix self-closing wall-mounted mixer with hand shower connection

Modell-Linie: F5S | F5SM2003
Showers | Self closing showers



KWC-No.

2030036686

F5S-Mix self-closing wall-mounted mixer DN 15 as single-mixer for wall mounting, for shower facilities. FRAMIC self-closing mixing cartridge, hydraulically controlled, low-maintenance and stagnation-free, with ceramic disc technology, self-closing, flow pressure-independent due to medium-separated design. Stepless adjustment of flow duration. With adjustable, turn-proof

temperature stop. Connects to hot and cold water. Housing with hand shower connection G 1/2 B. All-metal version, high-polished chromium-plated brass. With adjustable and turn-proof connections with backflow preventer and strainers, completely covered with depth-adjustable screw rosettes.

Technical Data

| | |
|--------------------------------|------------------------|
| additional connections | no |
| with backflow preventer | yes |
| calculation flow rate cold wat | 0.15 l/s |
| calculation flow rate hot wate | 0.15 l/s |
| circulation | no |
| compatible A3000 open | no |
| connection with pay water disp | not possible |
| with filter | yes |
| adjustable flow time | yes |
| functional principle | hydraulic self-closing |
| for hand shower | yes |
| hygiene flushing | no |
| diameter nominal | DN 15 |
| inlet size | G 1/2 B |
| Locking mechanism | Top section, ceramic |
| material fitting | brass |
| maximum flow time | 35 Seconds |
| minimum flow pressure | 0.5 bar |
| minimum flow time | 5 Seconds |
| type of mixing | yes |
| with rosettes/cover plate | yes |
| protective shutdown | no |
| shower pipe draining | no |
| sound insulation | no |
| surface finish fitting | chromed |



KWC

F5S-Mix self-closing wall-mounted mixer with hand shower connection

Modell-Linie: F5S | F5SM2003
Showers | Self closing showers

| | |
|------------------------------|----------------------|
| surface treatment fitting | polished |
| temperature limit | yes |
| thermal disinfection | no |
| type of mounting | wall mounting |
| type of operation | manual operation |
| type of shower | wall fitting |
| volume flow rate at 3 bar | 0.2 l/s |
| water connection | S-unions |
| position of water connection | from backside |
| Accent colour | none |
| Basic colour | chrome-look (glossy) |

Optional Accessories



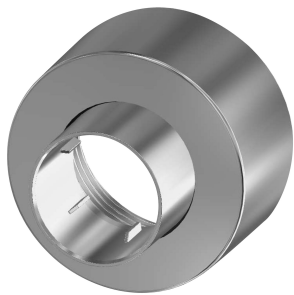
Hand shower

2030051216
ACXX2007

Shower bracket

2030051217
ACXX2008

Spare Parts



Screw rosette

2030046777
ASXX9003

Mounting set

2030003401
EAQLT0009

Plug chromed

2030053006
ASSX9004

Handle push cap

2030050753
ASSM9004

KWC

F5S-Mix self-closing wall-mounted mixer with hand shower connection

Modell-Linie: F5S | F5SM2003
Showers | Self closing showers



Guide ring

2030048356
ASSX9002



Temperature stop

2030046189
ASSM9002



Safety ring

2030048357
ASSX9003



FRAMIC self-closing mixing cartridge

2030046185
ASSM9001