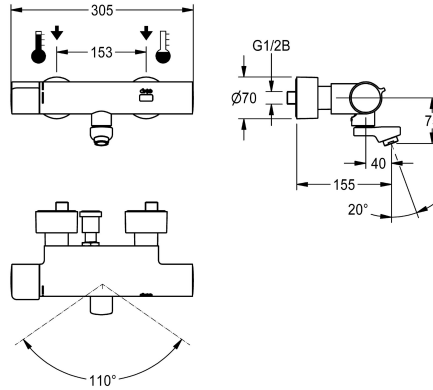


## KWC F5E-Therm

Electronic thermostatic wall-mounted mixer for separate power supply

Modell-Linie: F5E | F5ET1019

Taps | Electronic taps



### KWC-No.

**2030036211**

**2030036210**

Projection 155 mm

**2030036212**

Projection 275 mm

**2030039530**

with projection 155 mm and pre-installed disinfection unit

**2030039538**

with projection 215 mm and pre-installed disinfection unit

**2030039539**

with projection 275 mm and pre-installed disinfection unit

### spout projection

215 mm

155 mm

275 mm

155 mm

215 mm

275 mm

### thermal disinfection

yes

yes

yes

automatic thermal disinfection

automatic thermal disinfection

automatic thermal disinfection

F5E-Therm thermostatic mixer DN 15 for wall mounting with lockable swivelling spout, for sanitary facilities. Opto-electronically controlled, triggered via hand movement. Thermostat with metal handle with adjustable and turn-proof temperature stop. With option for thermal disinfection, manually or automatically via pre-assembled disinfection unit. For connection to hot and cold water. Control electronics, solenoid valve cartridge and sensor in scald-protected safe-touch housing, high-polished chromium-plated brass. Laminar jet controller with integrated flow regulator 6.0 l/min.

With adjustable and lockable connections with backflow preventer and strainers, completely covered with depth-adjustable screw rosettes. Projection 155 mm. Activated water hygiene flushing 24 hours after last activation, safety switch-off with continuous reflection and saving of statistical data. With option for parameterization and communication via optional, bidirectional remote control. Separate power supply via power supply unit 6.75 V / 12 V DC or AQUA 3000 open system accessories.

### Technical Data

with backflow preventer

yes

calculation flow rate cold water

0.07 l/s

calculation flow rate hot water

0.07 l/s

compatible A3000 open

yes

default automatic hygiene flush

24h after the last activity

default flow time

10 Seconds

depressurised

no

with filter

yes

adjustable flow time

yes

functional principle

electronic self-closing

hygiene flushing

yes

diameter nominal

DN 15

inlet size

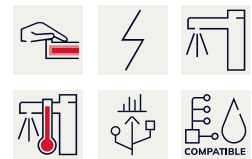
G 1/2 B

Locking mechanism

Top section, non-ceramic

material fitting

brass



## KWC F5E-Therm

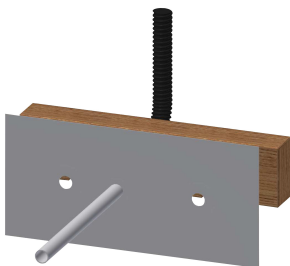
Electronic thermostatic wall-mounted mixer for separate power supply

**Modell-Linie: F5E | F5ET1019**

Taps | Electronic taps

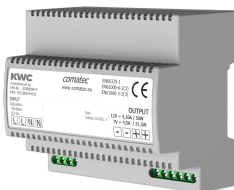
maximum flow time	255 Seconds
minimum flow pressure	1 bar
minimum flow time	1 Seconds
type of mixing	with thermostat
Parameterization	remote control
Pop-up waste set	no
power supply connection	6,75 / 12 VDC / A3000 open
position of power connection	from backside
power consumption	1.5 Voltampere
Type of power supply	Transformer
protective system IP	IP59K
with rosettes/cover plate	yes
protective shutdown	yes
sound insulation	no
Spout	rotating, bottom
spout projection	155 mm
surface finish fitting	chromed
surface treatment fitting	polished
temperature limit	yes
thermal disinfection	automatic thermal disinfection
with transformer/power supply	no
type of mounting	wall mounting
type of operation	sensor operation
type of sensor	opto-electronic sensor
type of tap	bib tap
Volume flow rate bypass PWH	0.05 l/s
volume flow rate at 3 bar	0.1 l/s
water connection	S-unions
Accent colour	none
Basic colour	chrome-look (glossy)

### Mandatory Accessories



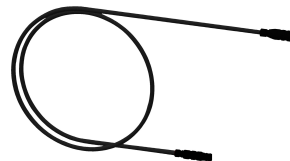
**Mounting bar for F5 wall-mounted mixers**

**2030071303**  
F5BTX002



**Power supply unit**

**2030039477**  
ACEX9001



**Extension cable 5 m**

**2030043814**  
ACEX9010

## KWC F5E-Therm

Electronic thermostatic wall-mounted mixer for separate power supply

Modell-Linie: F5E | F5ET1019

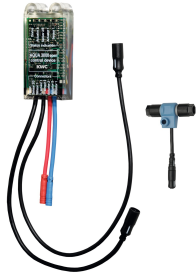
Taps | Electronic taps

### Optional Accessories



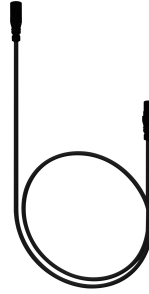
Theft-proof housing for aerator

**2000104778**  
ZTAPS0005



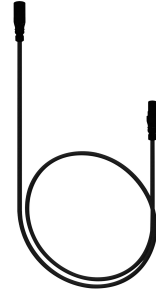
Electronic module for wash basin taps F5

**2030041914**  
ACET1001



Extension cable for sensor

**2030041919**  
ACEX9006



Extension cable for sensor

**2030041920**  
ACEX9007



Bidirectional remote control for electrical fittings F3 and F5

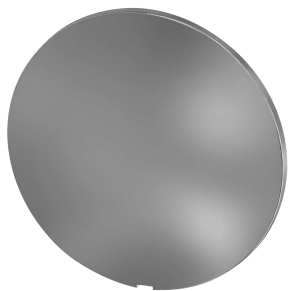
**2030036654**  
ACEX9005



2-button remote control for fittings F3 and F5

**2030036849**  
ACEX9004

### Spare Parts



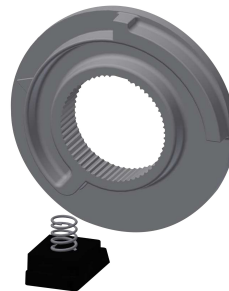
Cover

**2030003258**  
EAQLT0002



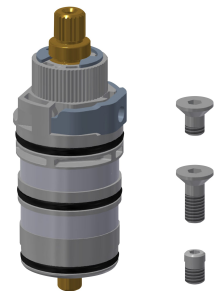
Temperature handle

**2030050541**  
ASXT9004



Temperature stop

**2030003296**  
EAQLT0003



Thermocouple

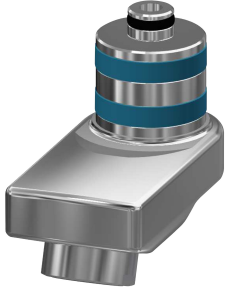
**2030003300**  
EAQLT0004

## KWC F5E-Therm

Electronic thermostatic wall-mounted mixer for separate power supply

Modell-Linie: F5E | F5ET1019

Taps | Electronic taps



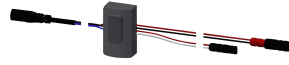
Swivel spout, 40 mm

**2030035159**  
ASXX1003



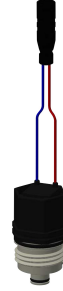
Laminar jet regulator

**2030012352**  
ETAPS0037



Sensor, ID 02/00002

**2030041459**  
ASXT9001



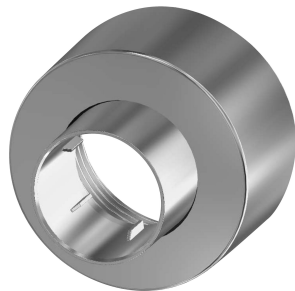
Solenoid valve cartridge

**2030045522**  
ACXX9002



Mounting set

**2030003401**  
EAQLT0009



Screw rosette

**2030046777**  
ASXX9003



Hexagonal socket wrench

**2030047722**  
ACEX9011