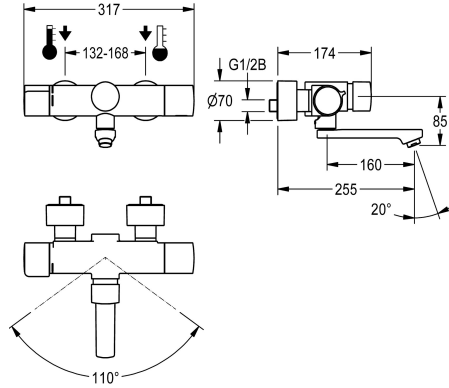


## KWC F5S-Therm Self-closing thermostatic mixer

Modell-Linie: F5S | F5ST1006  
Taps | Self closing taps



### KWC-No.

**2030040243**  
Projection 195 mm

**2030040242**  
Projection 135 mm

**2030040288**  
Projection 255 mm

### spout projection

195 mm

135 mm

255 mm

F5S-Therm self-closing thermostat wall mixer DN 15 for wall mounting with lockable swivelling spout, for sanitary facilities. Hydraulically controlled, connects to hot water and cold water. With a pre-assembled hygiene unit including sensor with control electronics and 6 V lithium battery (CR-P2) for automatic hygiene flushing and storage of statistical data. FRAMIC self-closing cartridge, hydraulically controlled, low-maintenance and stagnation-free, with ceramic disc technology, self-closing, flow pressure-independent due to medium-separated design. Stepless adjustment of flow duration. Thermostat with metal handle with

adjustable and turn-proof temperature stop, with option for performance of manual thermal disinfection. Scald-protected, safe-touch housing, all-metal construction, high-polished chromium-plated brass. Laminar jet controller with integrated flow regulator 6.0 l/min. With adjustable and lockable connections with backflow preventer and strainers, completely covered with depth-adjustable screw rosettes. Projection 255 mm. Activated hygiene flushing, fixed interval of 24 hours. With option for parameterization and communication via optional, bidirectional remote control.

### Technical Data

with backflow preventer

yes

calculation flow rate cold wat

0.07 l/s

calculation flow rate hot wate

0.07 l/s

compatible A3000 open

no

default automatic hygiene flus

fixed interval 24 hours

depressurised

no

with filter

yes

adjustable flow time

yes

functional principle

hydraulic self-closing

hygiene flushing

yes

diameter nominal

DN 15

inlet size

G 1/2 B

Locking mechanism

Top section, ceramic

material fitting

brass

maximum flow time

35 Seconds

minimum flow pressure

1 bar

minimum flow time

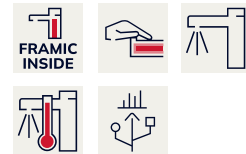
5 Seconds

type of mixing

with thermostat

number of batteries

1



## KWC F5S-Therm Self-closing thermostatic mixer

**Modell-Linie: F5S | F5ST1006**  
Taps | Self closing taps

Parameterization	remote control
Pop-up waste set	no
power supply connection	Battery 6 V
power consumption	1.5 Voltampere
Type of power supply	Battery
protective system IP	IP59K
with rosettes/cover plate	yes
protective shutdown	no
sound insulation	no
Spout	rotating, bottom
spout projection	255 mm
surface finish fitting	chromed
surface treatment fitting	polished
temperature limit	yes
thermal disinfection	manual thermal disinfection
with transformer/power supply	no
type of batteries	CR-P2 Lithium battery 6V
type of mounting	wall mounting
type of operation	manual operation
type of sensor	opto-electronic sensor
type of tap	bib tap
volume flow rate at 3 bar	0.1 l/s
water connection	S-unions
Accent colour	none
Basic colour	chrome-look (glossy)

### Optional Accessories



**Bidirectional remote control for electronic fittings F3 and F5**

**2030036654**  
ACEX9005



**2-button remote control for fittings F3 and F5**

**2030036849**  
ACEX9004



**Theft-proof housing for aerator**

**2000104778**  
ZTAPS0005

### Spare Parts

## KWC F5S-Therm Self-closing thermostatic mixer

Modell-Linie: F5S | F5ST1006  
Taps | Self closing taps



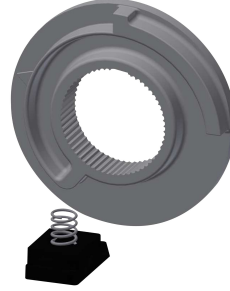
Cover

**2030003258**  
EAQLT0002



Temperature handle

**2030050541**  
ASXT9004



Temperature stop

**2030003296**  
EAQLT0003



Thermocouple

**2030003300**  
EAQLT0004



Screw rosette

**2030046777**  
ASXX9003



Mounting set

**2030003401**  
EAQLT0009



Plug chromed

**2030053006**  
ASSX9004



Push cap

**2030050542**  
ASST9001



Safety ring

**2030048357**  
ASSX9003



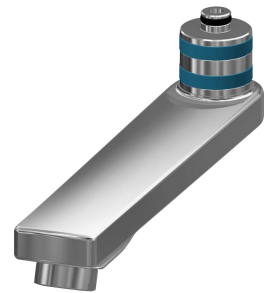
FRAMIC Self-closing cartridge

**2030046145**  
ASSX9001



Laminar jet regulator

**2030012352**  
ETAPS0037

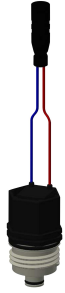


Swivel spout, 160 mm

**2030032815**  
ASXX1002

## KWC F5S-Therm Self-closing thermostatic mixer

Modell-Linie: F5S | F5ST1006  
Taps | Self closing taps



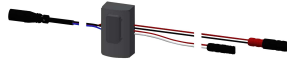
Solenoid valve cartridge

**2030045522**  
ACXX9002



Lithium battery 6 V

**2000104846**  
EPRTR0008



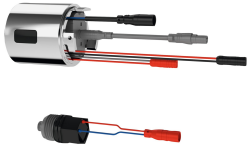
Sensor, ID 81/00001

**2030041485**  
ASLM9001



F5 Foil

**2030053034**  
ASET2010



Hygiene unit for F5S-Therm

**2030041162**  
ACST9001



Hexagonal socket wrench

**2030047722**  
ACEX9011