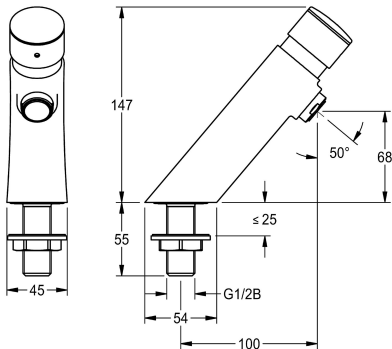


KWC F3S  
Self-closing pillar tap

Modell-Linie: F3S | F3SV1004  
Taps | Self closing taps



KWC-No.

**2030049135**  
with anti-blocking system 2 (ABS2) for safety switch-off when actuated continuously

F3S self-closing DN 15 pillar tap for sanitary facilities. Self-closing cartridge, hydraulically controlled, self-closing, stepless adjustment of flow duration. With anti-blocking system 2 (ABS2) for safety

protective shutdown

yes

switch-off when permanently active. For connection to pre-mixed hot water or cold water. High-polished, chrome-plated brass housing. Aerator with an integrated flow rate controller 3.0 l/min.

Technical Data

with backflow preventer
depressurised
with filter
adjustable flow time
functional principle
hygiene flushing
diameter nominal
inlet size
Locking mechanism
material fitting
type of mixing
Pop-up waste set
with rosettes/cover plate
protective shutdown
Spout
surface finish fitting
surface treatment fitting
temperature limit
thermal disinfection
type of mounting
type of operation
type of tap
water connection
Accent colour
Basic colour

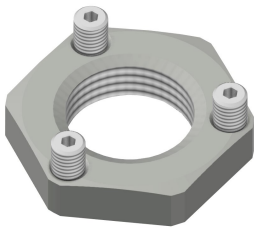
no
no
no
yes
hydraulic self-closing
no
DN 15
G 1/2 B
Top section, non-ceramic
brass
no
no
no
yes
fixed
chromed
polished
no
no
tap hole
manual operation
pillar tap
threaded connection (external)
none
chrome-look (glossy)



**KWC F3S**  
Self-closing pillar tap

**Modell-Linie: F3S | F3SV1004**  
Taps | Self closing taps

**Optional Accessories**



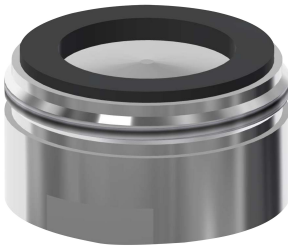
**Anti-twist protection**

**2030041946**  
ACSV1001



**PURETHERM under-table thermostat**

**2030012758**  
PURE0031



**Aerator 6.0 l/min**

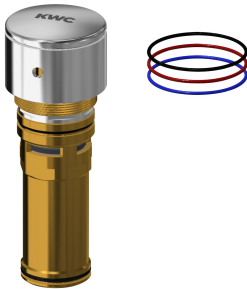
**2000104691**  
ASXX1015



**Theft-proof housing for aerator**

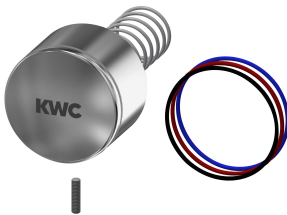
**2000104778**  
ZTAPS0005

**Spare Parts**



**Functional part**

**2030049138**  
ASSV1005



**Push cap**

**2030052693**  
ASSX1005



**Set screw M3x12**

**2030052713**  
ASSX1006



**3.0 l/min. aerator**

**2030041424**  
ASXX1008