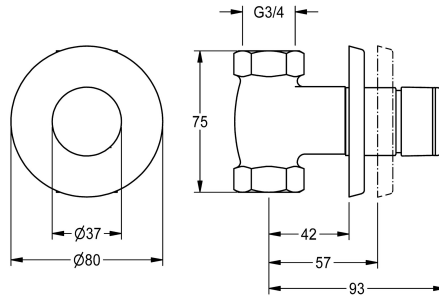


KWC

F3S Self-closing straight-way valve DN 20

Modell-Linie: F3S | F3SV2009

Showers | Self closing showers



KWC-No.

2030053188

F3S Self-closing straight-way valve DN 20 for in-wall mounting, for shower facilities. Self-closing functional part, hydraulically controlled, piston-free design, automatic closing, adjustable flow duration. For connection to pre-mixed hot water or cold water.

Housing including replaceable valve seat, with interior thread G 3/4, visible parts made of high-polished chrome-plated brass. With rosette, depth adjustability 15 mm.

Technical Data

additional connections
with backflow preventer
Built-in fitting model
calculation flow rate cold wat
circulation
compatible A3000 open
connection with pay water disp
with filter
adjustable flow time
functional principle
for hand shower
hygiene flushing
diameter nominal
inlet size
Locking mechanism
material fitting
maximum flow time
minimum flow pressure
minimum flow time
type of mixing
with rosettes/cover plate
protective shutdown
shower pipe draining
sound insulation
surface finish fitting
temperature limit

No
No
Built-in section
0.3 l/s
No
No
not possible
No
Yes
hydraulic self-closing
No
No
DN 20
G 3/4
Top section, non-ceramic
brass-look
30 Seconds
1 bar
5 Seconds
No
Yes
No
No
No
chromed
No

KWC

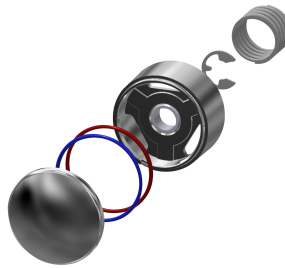
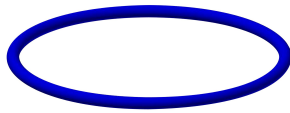
F3S Self-closing straight-way valve DN 20

Modell-Linie: **F3S | F3SV2009**

Showers | Self closing showers

thermal disinfection	No
type of mounting	in-wall installation without b
type of operation	manual operation
type of shower	in-wall fitting
volume flow rate at 3 bar	1.25 l/s
water connection	threaded connection (internal)
position of water connection	from bottom
Accent colour	none
Basic colour	chrome-look (glossy)

Spare Parts



O-Ring, red

2030042961
ASSV2002

O-Ring, blue

2030042962
ASSV2003

Push cap

2030042960
ASSV2001

Push-on rosette

2000104892
EAQLN0008