

#### KWC-No.

**2030054793**

MÜNCHEN shower head for F5 shower panels

MÜNCHEN shower head with continuously adjustable shower jet between 9° - 21°, for installation on KWC shower panels and shower

systems with pre-mounted connecting nozzles DN 15, diameter 26 mm, polished chromium-plated brass housing.

#### Technical Data

diameter nominal

DN 15

adjustable tilt angle

Yes

type

shower head

type of connection

Shower panel

type of shower head

jet shower head

#### Spare Parts



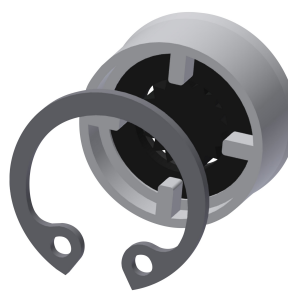
#### Retaining ring

**2000104851**  
ESHMU0005



#### Sphere

**2000104839**  
ESHMU0001



#### Flow controller 9,0 l/min

**2000104782**  
ESHHE0001



#### Retaining ring

**2000102690**  
ZAQUA093