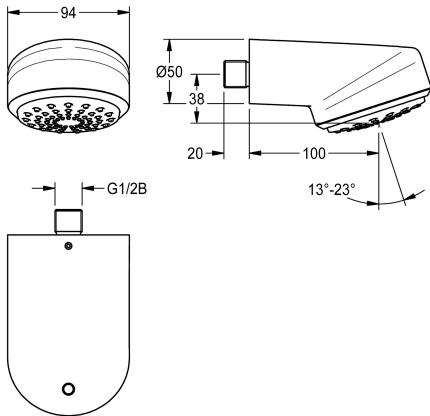




**KWC** AQUAJET-Comfort  
Shower head for wall connection

Modell-Linie: **AQUAJET-COMFORT | SHAC0013**  
Showers | Shower heads



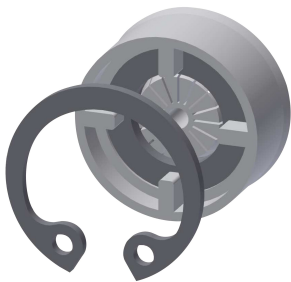
<b>KWC-No.</b>
<b>2030055724</b>
AQUAJET-Comfort shower head

AQUAJET-Comfort DN 15 shower head with plastic jet face continuously adjustable between 13–23°, anti-limescale system and low aerosol formation. For wall connector with insertable connecting nozzle, diameter 26 mm, high-polished chrome-plated

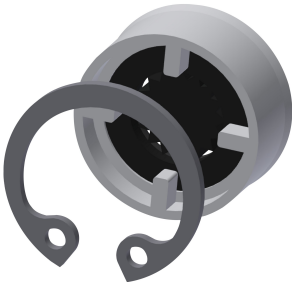
brass housing, with integrated flow regulator 9.0 l/min, ready for installation of anti-twist protection.  
Also suitable for shower trays, 800 x 800 mm.

Technical Data	
diameter nominal	DN 15
adjustable tilt angle	Yes
type	shower head
type of connection	wall connection
type of shower head	spray shower head

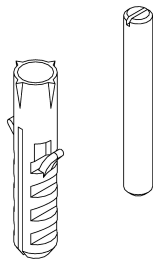
**Optional Accessories**



<b>Flow controller 6.0 l/min</b>
<b>2030027586</b>
ESHHE0004



<b>Flow controller 12.0 l/min</b>
<b>2000104783</b>
ESHHE0002



<b>Anti-twist protection</b>
<b>2000101108</b>
ZAQUA004



<b>Adhesive flange</b>
<b>2000101467</b>
ZAQUA701



**KWC** AQUAJET-Comfort  
Shower head for wall connection

Modell-Linie: **AQUAJET-COMFORT | SHAC0013**  
Showers | Shower heads



**AQUAFIX bar**

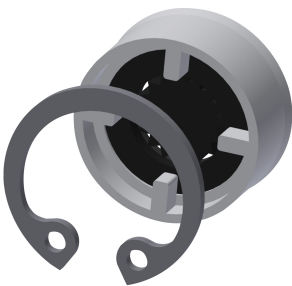
**2000104310**  
ZCMPX005

**Spare Parts**



**Plug**

**2030027581**  
ESHAC0002



**Flow controller 9,0 l/min**

**2000104782**  
ESHHE0001