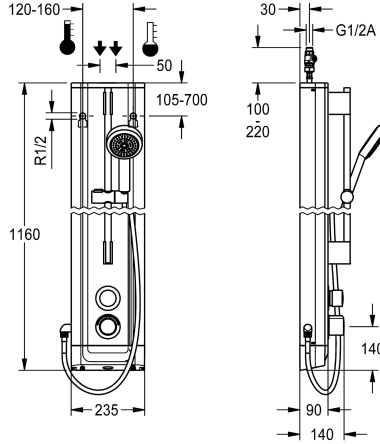


KWC F5S-Therm Stainless steel shower panel with hand shower fitting

Modell-Linie: F5S | F5ST2021
Showers | Self closing showers



KWC-No.

2030056539

F5S Therm shower panel made of stainless steel for wall mounting with DN 15 self-closing thermostatic mixer and connecting nozzles for a hand shower fitting. Hydraulically controlled, for connection to hot water and cold water. Shower valve with integrated FRAMIC self-closing cartridge, thermostat and pre-assembled hygiene unit including sensor with control electronics to perform automatic water hygiene flushing, program-controlled thermal disinfection (additional bypass solenoid-operated flush valve cartridge required) and storage of statistical data. FRAMIC self-closing cartridge, low maintenance and stagnation free, with ceramic disc technology, self-closing, flow pressure independent due to the medium-independent design. Stepless adjustment of flow duration. Thermostat with metal handle, an adjustable and turn-proof temperature stop and an option for manual thermal disinfection. All-metal construction, visible parts high-polished or chrome-plated. Pre-fitted chrome-plated brass shower pole with height-adjustable

hand shower holder and chrome-plated plastic hand shower, shower head with rain jet, diameter 110 mm, shower hose 900 mm. Housing made of stainless steel with raised function surface and plastic cover caps. Connecting hoses with lockable water volume control with backflow preventer and strainer. Activated water hygiene flushing at fixed intervals of 24 hours. With option for parameterization and communication via the optional bidirectional remote control. Optional hygiene unit for battery operation with 6 V lithium battery (CR-P2) per fitting or separate power supply via plug-in power supply unit 6.75 V/12 V DC.

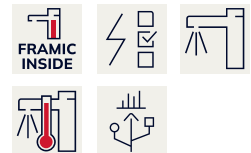
Dimensions of housing 235 x 1160 x 90 mm (W x H x D)

Battery compartment including battery or plug-in power supply unit with extension cable to be ordered separately.

Technical Data

additional connections	no
with backflow preventer	yes
circulation	no
compatible A3000 open	no
connection with pay water disp	not possible
default automatic hygiene flus	fixed interval 24 hours
with filter	yes
adjustable flow time	yes
functional principle	hydraulic self-closing
for hand shower	yes
hygiene flushing	yes
diameter nominal	DN 15
inlet size	G 1/2 A
Locking mechanism	Top section, ceramic
material casing	stainless steel
material code casing	1.4301 Chrome Nickel steel V2A
material fitting	brass
maximum flow time	35 Seconds
minimum flow pressure	1 bar

no
yes
no
no
not possible
fixed interval 24 hours
yes
yes
hydraulic self-closing
yes
yes
DN 15
G 1/2 A
Top section, ceramic
stainless steel
1.4301 Chrome Nickel steel V2A
brass
35 Seconds
1 bar



KWC F5S-Therm

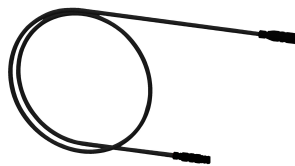
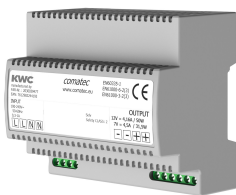
Stainless steel shower panel with hand shower fitting

Modell-Linie: F5S | F5ST2021

Showers | Self closing showers

minimum flow time	5 Seconds
type of mixing	with thermostat
overall depth	90 mm
overall height	1,160 mm
overall width	235 mm
Parameterization	remote control
power supply connection	6,75 / 12 VDC
position of power connection	from top / backside
Type of power supply	Other
with rosettes/cover plate	yes
protective shutdown	no
shower pipe draining	no
with shower set	yes
sound insulation	no
surface finish casing	satin finished
surface finish fitting	chromed
surface treatment fitting	polished
temperature limit	yes
thermal disinfection	yes
with transformer/power supply	no
type of mounting	wall mounting
type of operation	manual operation
type of sensor	opto-electronic sensor
type of shower	shower panel
water connection	hose (gland nut)
position of water connection	from top / backside
with soap dish	no
Accent colour	chrome-look (glossy)
Basic colour	stainless steel

Mandatory Accessories



Power supply unit

2030039477
ACEX9001

Extension cable 5 m

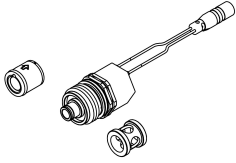
2030043814
ACEX9010

Optional Accessories

KWC F5S-Therm

Stainless steel shower panel with hand shower fitting

Modell-Linie: F5S | F5ST2021
Showers | Self closing showers



Set for thermal disinfection

2030057940
ACXT2001



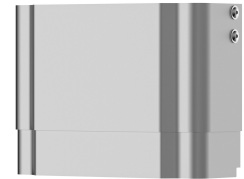
Bidirectional remote control for electrical fittings F3 and F5

2030036654
ACEX9005



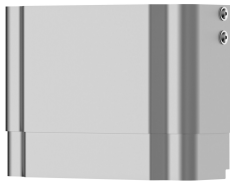
2-button remote control for fittings F3 and F5

2030036849
ACEX9004



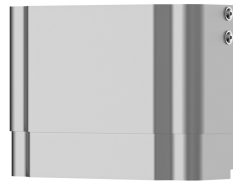
Housing extension for F5 shower panels made of stainless steel

2030057066
ACXX2011



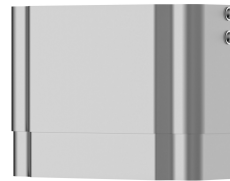
Housing extension for F5 shower panels made of stainless steel

2030057067
ACXX2012



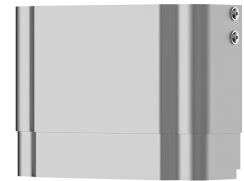
Housing extension for F5 shower panels made of stainless steel

2030057068
ACXX2013



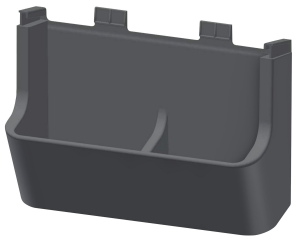
Housing extension for F5 shower panels made of stainless steel

2030057069
ACXX2014



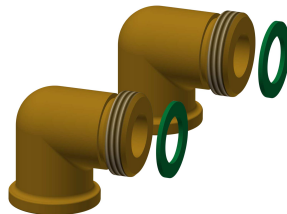
Housing extension for F5 shower panels made of stainless steel

2030057070
ACXX2015



Shower gel dish for F5 shower panels made of stainless steel

2030057077
ACXX2021



Connection set for shower panel

2000104916
ZSHOW0006



Connection adapter

2000101441
AQRM928

Spare Parts

KWC F5S-Therm

Stainless steel shower panel with hand shower fitting

Modell-Linie: F5S | F5ST2021
Showers | Self closing showers



Hand shower

2030051216
ACXX2007



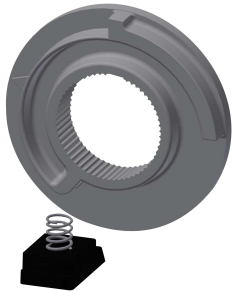
Cover

2030031443
ESHOW0059



Temperature handle

2030047082
ASXT9003



Temperature stop

2030003296
EAQLT0003



Plug chromed

2030053006
ASSX9004



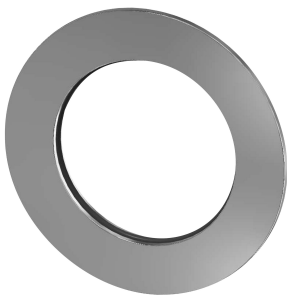
Push cap

2030049943
ASST2001



Safety ring

2030048357
ASSX9003



Rosette

2030048765
ASET2006



FRAMIC Self-closing cartridge

2030046145
ASSX9001



Solenoid valve cartridge

2030003033
EAQFU0001



Stainless steel care set

2000109019
ZWSP.L0024



KWC F5S-Therm

Stainless steel shower panel with hand shower fitting

Modell-Linie: F5S | F5ST2021
Showers | Self closing showers



Cleaning product CHROMOL

2000105091
ZWSPL0023
