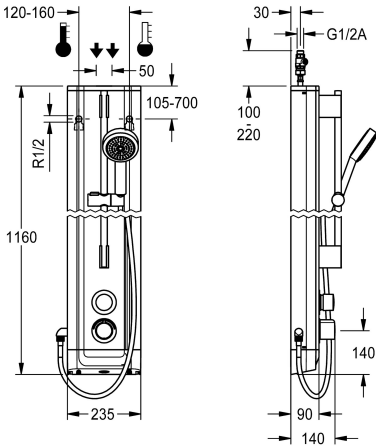


KWC F5S-Therm  
Stainless steel shower panel with hand shower fitting

Modell-Linie: F5S | F5ST2023  
Showers | Self closing showers



KWC-No.

2030056542

F5S Therm shower panel made of stainless steel for wall mounting with DN 15 self-closing thermostatic mixer and a hand shower fitting. Hydraulically controlled, for connection to hot water and cold water. Shower valve with integrated FRAMIC self-closing cartridge, thermostat and mechanism for an optional water hygiene unit for automatic water hygiene flushing, program-controlled thermal disinfection (additional bypass solenoid-operated flush valve cartridge required) and storage of statistical data. FRAMIC self-closing cartridge, low maintenance and stagnation free, with ceramic disc technology, self-closing, flow pressure independent due to the medium-independent design. Stepless adjustment of

flow duration. Thermostat with metal handle, an adjustable and turn-proof temperature stop and an option for manual thermal disinfection. All-metal construction, visible parts high-polished or chrome-plated. Pre-fitted chrome-plated brass shower pole with height-adjustable hand shower holder and chrome-plated plastic hand shower, shower head with rain jet, diameter 110 mm, shower hose 900 mm. Housing made of stainless steel with raised function surface and plastic cover caps. Connecting hoses with lockable water volume control with backflow preventer and strainer.

Dimensions of housing 235 x 1160 x 90 mm (W x H x D)

Technical Data

additional connections
with backflow preventer
circulation
compatible A3000 open
connection with pay water disp
with filter
adjustable flow time
functional principle
for hand shower
hygiene flushing
diameter nominal
inlet size
Locking mechanism
material casing
material code casing
material fitting
maximum flow time
minimum flow pressure
minimum flow time
type of mixing
overall depth
overall height

no
hoses with inner pvc lining
no
no
not possible
hoses with inner pvc lining
hoses with inner pvc lining
hydraulic self-closing
hoses with inner pvc lining
prepared
DN 15
G 1/2 A
Top section, ceramic
stainless steel
1.4301 Chrome Nickel steel V2A
brass-look
35 Seconds
1 bar
5 Seconds
with thermostat
90 mm
1,160 mm

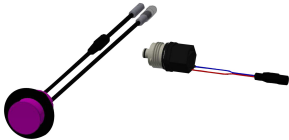


KWC F5S-Therm  
Stainless steel shower panel with hand shower fitting

Modell-Linie: F5S | F5ST2023  
Showers | Self closing showers

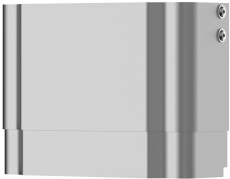
overall width	235 mm
with rosettes/cover plate	hoses with inner pvc lining
protective shutdown	no
shower pipe draining	no
with shower set	hoses with inner pvc lining
sound insulation	no
surface finish casing	satin finished
surface finish fitting	chromed
surface treatment fitting	polished
temperature limit	hoses with inner pvc lining
thermal disinfection	hoses with inner pvc lining
type of mounting	wall mounting
type of operation	manual operation
type of shower	shower panel
water connection	hose (gland nut)
position of water connection	from top / backside
with soap dish	no
Accent colour	chrome-look (glossy)
Basic colour	stainless steel-look

Optional Accessories



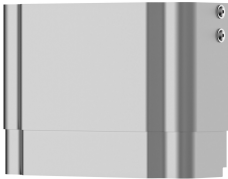
Hygiene unit for F5S Therm shower panel

2030057064  
ACST2004



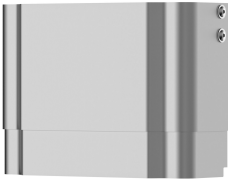
Housing extension for F5 shower panels made of stainless steel

2030057066  
ACXX2011



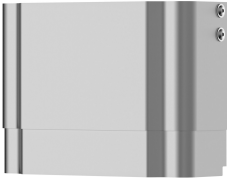
Housing extension for F5 shower panels made of stainless steel

2030057067  
ACXX2012

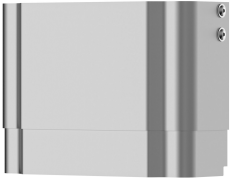


Housing extension for F5 shower panels made of stainless steel

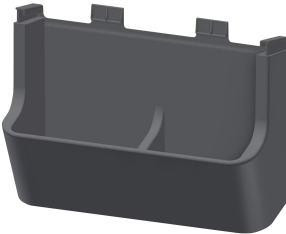
2030057068  
ACXX2013



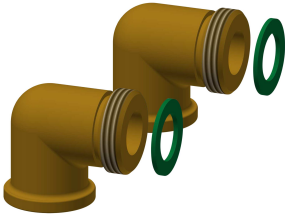
Housing extension for F5 shower



Housing extension for F5 shower



Shower gel dish for F5 shower panels



Connection set for shower panel



**KWC F5S-Therm**  
Stainless steel shower panel with hand shower fitting

Modell-Linie: **F5S | F5ST2023**  
Showers | Self closing showers

panels made of stainless steel

**2030057069**  
ACXX2014



panels made of stainless steel

**2030057070**  
ACXX2015

made of stainless steel

**2030057077**  
ACXX2021

**2000104916**  
ZSHOW0006

Connection adapter

**2000101441**  
AQRM928

Spare Parts



Hand shower

**2030051216**  
ACXX2007

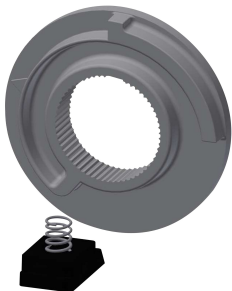
Cover

**2030031443**  
ESHOW0059



Temperature handle

**2030047082**  
ASXT9003



Temperature stop

**2030003296**  
EAQT0003



Plug chromed

**2030053006**  
ASSX9004

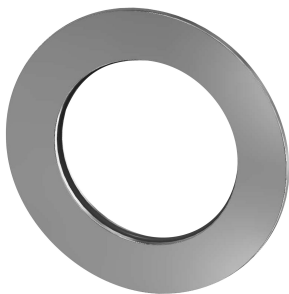
Push cap

**2030049943**  
ASST2001



Safety ring

**2030048357**  
ASSX9003



Rosette

**2030048765**  
ASET2006



**KWC F5S-Therm**  
Stainless steel shower panel with hand shower fitting

**Modell-Linie: F5S | F5ST2023**  
Showers | Self closing showers



**FRAMIC Self-closing cartridge**

**2030046145**  
ASSX9001



**Stainless steel care set**

**2000109019**  
ZWSPL0024



**Cleaning product CHROMOL**

**2000105091**  
ZWSPL0023