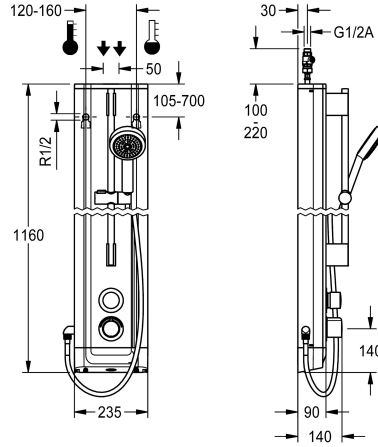


KWC F5S-Therm Stainless steel shower panel with hand shower fitting

Modell-Linie: F5S | F5ST2023
Showers | Self closing showers



KWC-No.

2030056542

F5S Therm shower panel made of stainless steel for wall mounting with DN 15 self-closing thermostatic mixer and a hand shower fitting. Hydraulically controlled, for connection to hot water and cold water. Shower valve with integrated FRAMIC self-closing cartridge, thermostat and mechanism for an optional water hygiene unit for automatic water hygiene flushing, program-controlled thermal disinfection (additional bypass solenoid-operated flush valve cartridge required) and storage of statistical data. FRAMIC self-closing cartridge, low maintenance and stagnation free, with ceramic disc technology, self-closing, flow pressure independent due to the medium-independent design. Stepless adjustment of

flow duration. Thermostat with metal handle, an adjustable and turn-proof temperature stop and an option for manual thermal disinfection. All-metal construction, visible parts high-polished or chrome-plated. Pre-fitted chrome-plated brass shower pole with height-adjustable hand shower holder and chrome-plated plastic hand shower, shower head with rain jet, diameter 110 mm, shower hose 900 mm. Housing made of stainless steel with raised function surface and plastic cover caps. Connecting hoses with lockable water volume control with backflow preventer and strainer.

Dimensions of housing 235 x 1160 x 90 mm (W x H x D)

Technical Data

additional connections

no

with backflow preventer

yes

circulation

no

compatible A3000 open

no

connection with pay water disp

not possible

with filter

yes

adjustable flow time

yes

functional principle

hydraulic self-closing

for hand shower

yes

hygiene flushing

prepared

diameter nominal

DN 15

inlet size

G 1/2 A

Locking mechanism

Top section, ceramic

material casing

stainless steel

material code casing

1.4301 Chrome Nickel steel V2A

material fitting

brass

maximum flow time

35 Seconds

minimum flow pressure

1 bar

minimum flow time

5 Seconds

type of mixing

with thermostat

overall depth

90 mm

overall height

1.160 mm



KWC F5S-Therm

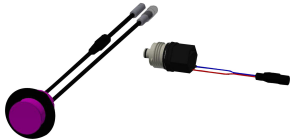
Stainless steel shower panel with hand shower fitting

Modell-Linie: F5S | F5ST2023

Showers | Self closing showers

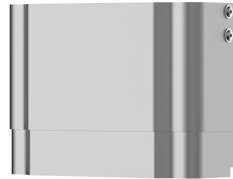
| | |
|------------------------------|----------------------|
| overall width | 235 mm |
| with rosettes/cover plate | yes |
| protective shutdown | no |
| shower pipe draining | no |
| with shower set | yes |
| sound insulation | no |
| surface finish casing | satin finished |
| surface finish fitting | chromed |
| surface treatment fitting | polished |
| temperature limit | yes |
| thermal disinfection | yes |
| type of mounting | wall mounting |
| type of operation | manual operation |
| type of shower | shower panel |
| water connection | hose (gland nut) |
| position of water connection | from top / backside |
| with soap dish | no |
| Accent colour | chrome-look (glossy) |
| Basic colour | stainless steel |

Optional Accessories



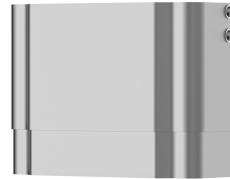
Hygiene unit for F5S Therm shower panel

2030057064
ACST2004



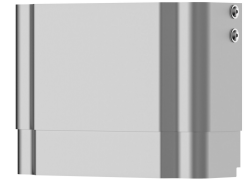
Housing extension for F5 shower panels made of stainless steel

2030057066
ACXX2011



Housing extension for F5 shower panels made of stainless steel

2030057067
ACXX2012



Housing extension for F5 shower panels made of stainless steel

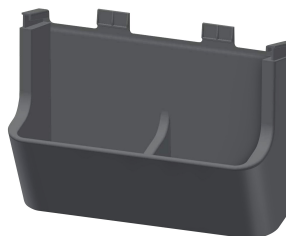
2030057068
ACXX2013



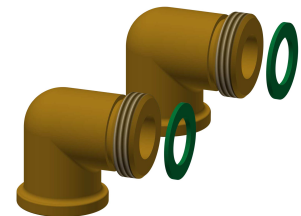
Housing extension for F5 shower



Housing extension for F5 shower



Shower gel dish for F5 shower panels



Connection set for shower panel

KWC F5S-Therm

Stainless steel shower panel with hand shower fitting

Modell-Linie: F5S | F5ST2023
Showers | Self closing showers

panels made of stainless steel

2030057069
ACXX2014

panels made of stainless steel

2030057070
ACXX2015

made of stainless steel

2030057077
ACXX2021

2000104916
ZSHOW0006



Connection adapter

2000101441
AQRM928

Spare Parts



Hand shower

2030051216
ACXX2007



Flow regulator with filter

2030051583
ASXX2003

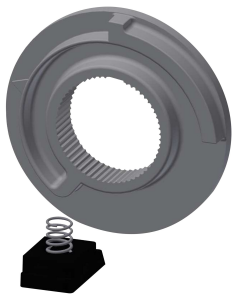
Cover

2030031443
ESHOW0059



Temperature handle

2030047082
ASXT9003



Temperature stop

2030003296
EAQLT0003



Plug chromed

2030053006
ASSX9004



Push cap

2030049943
ASST2001



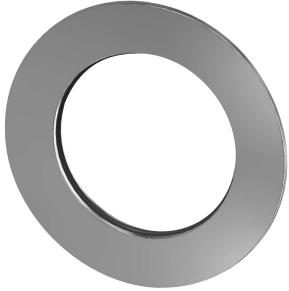
Safety ring

2030048357
ASSX9003

KWC F5S-Therm

Stainless steel shower panel with hand shower fitting

Modell-Linie: F5S | F5ST2023
Showers | Self closing showers



Rosette

2030048765
ASET2006



FRAMIC Self-closing cartridge

2030046145
ASSX9001



Stainless steel care set

2000109019
ZWSPL0024



Cleaning product CHROMOL

2000105091
ZWSPL0023