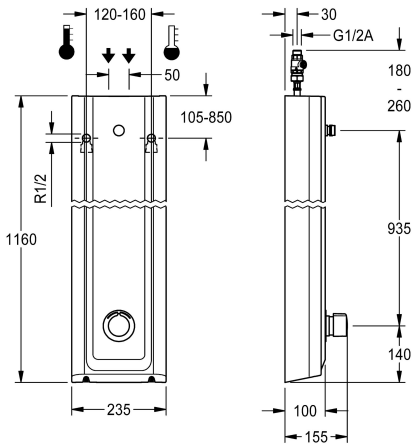


KWC
F5S Mix MIRANIT shower panel

Modell-Linie: F5S | F5SM2024
Showers | Self closing showers



KWC-No.

2030056549

2030056584

with automatic shower pipe draining

shower pipe draining

No

Yes

F5S Mix shower panel made of mineral material for wall mounting with DN 15 self-closing single control mixer and connecting nozzles for the shower head. FRAMIC self-closing mixing cartridge, hydraulically controlled, low maintenance and stagnation free, with ceramic disc technology, self-closing, flow pressure independent due to the medium-independent design. Stepless adjustment of flow duration. With adjustable, turn-proof temperature stop. For connection to hot water and cold water. All-metal construction, visible parts high-polished or chrome-plated. Connecting nozzles for the required additional DN 15 KWC shower head with pre-fitted

flow regulator 9.0 l/min. Housing with raised function surface made of MIRANIT resin-bonded mineral material with pore-free smooth surface (temperature-resistant up to 80 °C), Alpine white colour. Connecting hoses with lockable water volume control with backflow preventer and strainer.

Dimensions of housing 235 x 1160 x 100 mm (W x H x D)

Shower head to be ordered separately.

Technical Data

additional connections

with backflow preventer

circulation

compatible A3000 open

connection with pay water disp

with filter

adjustable flow time

functional principle

for hand shower

hygiene flushing

diameter nominal

inlet size

Locking mechanism

material casing

material code casing

material fitting

maximum flow time

minimum flow pressure

minimum flow time

type of mixing

overall depth

No

Yes

No

No

not possible

Yes

Yes

hydraulic self-closing

No

No

DN 15

G 1/2 A

Top section, ceramic

mineral material

Miranit

brass-look

35 Seconds

1.5 bar

5 Seconds

Yes

100 mm






KWC
F5S Mix MIRANIT shower panel

Modell-Linie: F5S | F5SM2024
Showers | Self closing showers

| | |
|------------------------------|----------------------------|
| overall height | 1,160 mm |
| overall width | 235 mm |
| with rosettes/cover plate | Yes |
| protective shutdown | No |
| shower pipe draining | No |
| Shower head | for separately shower head |
| with shower set | No |
| sound insulation | No |
| surface finish fitting | chromed |
| surface treatment fitting | polished |
| temperature limit | Yes |
| thermal disinfection | No |
| type of mounting | wall mounting |
| type of operation | manual operation |
| type of shower | shower panel |
| volume flow rate at 3 bar | 0.15 l/s |
| water connection | hose (gland nut) |
| position of water connection | from top / backside |
| with soap dish | No |
| Accent colour | chrome-look (glossy) |
| Basic colour | white |

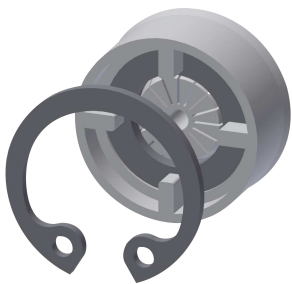
Mandatory Accessories

| | | |
|--|---|--|
|  |  |  |
| AQUAJET-Slimline shower head for KWC shower panels and systems | AQUAJET-Comfort shower head for KWC shower panels and systems | MÜNCHEN shower head for KWC shower panels and systems |
| 2030054255 SHAS0011 | 2030054254 SHAC0011 | 2030054793 SHMU0011 |

Optional Accessories

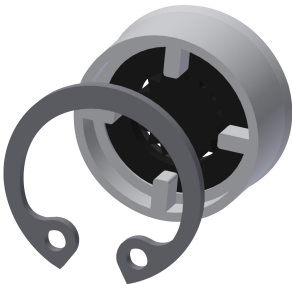
KWC
F5S Mix MIRANIT shower panel

Modell-Linie: F5S | F5SM2024
Showers | Self closing showers



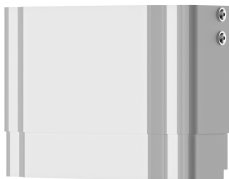
Flow controller 6.0 l/min

2030027586
ESHHE0004



Flow controller 12.0 l/min

2000104783
ESHHE0002



Housing extension for F5 shower
panels made of MIRANIT

2030057071
ACXX2016



Housing extension for F5 shower
panels made of MIRANIT

2030057072
ACXX2017



Housing extension for F5 shower
panels made of MIRANIT

2030057073
ACXX2018



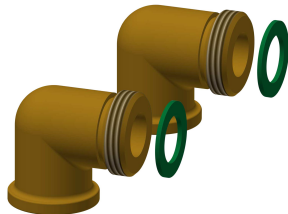
Housing extension for F5 shower
panels made of MIRANIT

2030057075
ACXX2019



Housing extension for F5 shower
panels made of MIRANIT

2030057076
ACXX2020



Connection set for shower panel

2000104916
ZSHOW0006



Connection adapter

2000101441
AQRM928

Spare Parts

KWC
F5S Mix MIRANIT shower panel

Modell-Linie: F5S | F5SM2024
Showers | Self closing showers



Plug chromed

2030053006
ASSX9004



Handle push cap

2030050753
ASSM9004



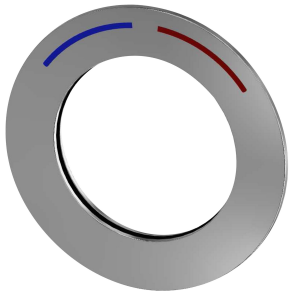
Temperature stop

2030046189
ASSM9002



Safety ring

2030048357
ASSX9003



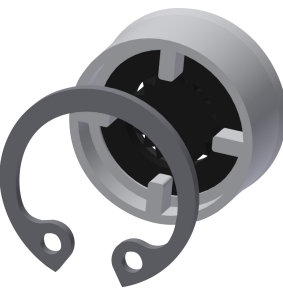
Rosette

2030045510
ASXM2003



FRAMIC self-closing mixing cartridge

2030046185
ASSM9001



Flow controller 9,0 l/min

2000104782
ESHHE0001