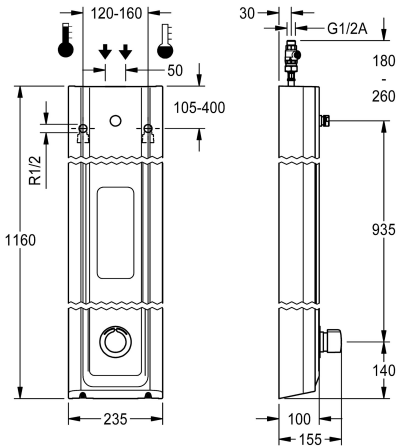


KWC  
F5S Mix MIRANIT shower panel with shower gel shelf

Modell-Linie: F5S | F5SM2026  
Showers | Self closing showers



KWC-No.

2030056552

2030056588

with automatic shower pipe draining

shower pipe draining

No

Yes

F5S Mix shower panel made of mineral material for wall mounting with DN 15 self-closing single control mixer and connecting nozzles for the shower head. FRAMIC self-closing mixing cartridge, hydraulically controlled, low maintenance and stagnation free, with ceramic disc technology, self-closing, flow pressure independent due to the medium-independent design. Stepless adjustment of flow duration. With adjustable, turn-proof temperature stop. For connection to hot water and cold water. All-metal construction, visible parts high-polished or chrome-plated. Connecting nozzles for the required additional DN 15 KWC shower head with pre-fitted

flow regulator 9.0 l/min. Housing with raised function surface and seamless moulded shower gel shelf made of MIRANIT resin-bonded mineral material with pore-free smooth surface (temperature-resistant up to 80 °C), Alpine white colour. Connecting hoses with lockable water volume control with backflow preventer and strainer.

Dimensions of housing 235 x 1160 x 100 mm (W x H x D)

Shower head to be ordered separately.

Technical Data

additional connections

with backflow preventer

circulation

compatible A3000 open

connection with pay water disp

with filter

adjustable flow time

functional principle

for hand shower

diameter nominal

inlet size

Locking mechanism

material casing

material code casing

material fitting

maximum flow time

minimum flow pressure

minimum flow time

type of mixing

overall depth

overall height

No

Yes

No

No

not possible

Yes

Yes

hydraulic self-closing

No

DN 15

G 1/2 A

Top section, ceramic

mineral material

Miranit

brass-look

35 Seconds

1.5 bar

5 Seconds

Yes

100 mm

1,160 mm



KWC  
F5S Mix MIRANIT shower panel with shower gel shelf

Modell-Linie: F5S | F5SM2026  
Showers | Self closing showers

overall width	235 mm
with rosettes/cover plate	Yes
protective shutdown	No
shower pipe draining	No
Shower head	for separately shower head
with shower set	No
surface finish fitting	chromed
surface treatment fitting	polished
temperature limit	Yes
thermal disinfection	No
type of mounting	wall mounting
type of operation	manual operation
type of shower	shower panel
volume flow rate at 3 bar	0.15 l/s
water connection	hose (gland nut)
position of water connection	from top / backside
with soap dish	integrated
Accent colour	chrome-look (glossy)
Basic colour	white

Mandatory Accessories



AQUAJET-Slimline shower head for KWC shower panels and systems  
2030054255  
SHAS0011

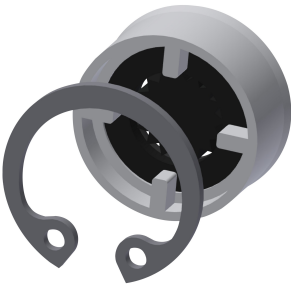
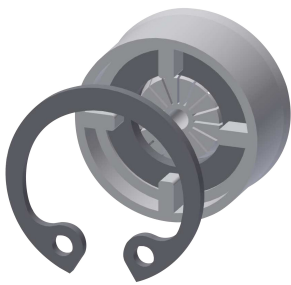


AQUAJET-Comfort shower head for KWC shower panels and systems  
2030054254  
SHAC0011



MÜNCHEN shower head for KWC shower panels and systems  
2030054793  
SHMU0011

Optional Accessories



KWC  
F5S Mix MIRANIT shower panel with shower gel shelf

Modell-Linie: F5S | F5SM2026  
Showers | Self closing showers

Flow controller 6.0 l/min

2030027586  
ESHHE0004



Flow controller 12.0 l/min

2000104783  
ESHHE0002



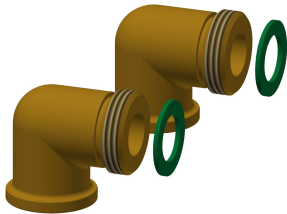
Housing extension for F5 shower panels made of MIRANIT

2030057071  
ACXX2016



Housing extension for F5 shower panels made of MIRANIT

2030057072  
ACXX2017



Housing extension for F5 shower panels made of MIRANIT

2030057073  
ACXX2018



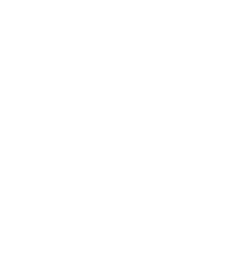
Housing extension for F5 shower panels made of MIRANIT

2030057075  
ACXX2019



Housing extension for F5 shower panels made of MIRANIT

2030057076  
ACXX2020



Connection set for shower panel

2000104916  
ZSHOW0006



Connection adapter

2000101441  
AQRM928



Spare Parts

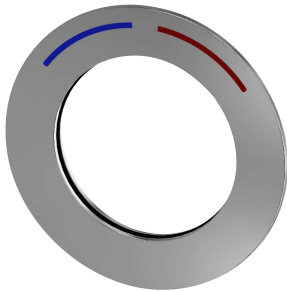


KWC  
F5S Mix MIRANIT shower panel with shower gel shelf

Modell-Linie: F5S | F5SM2026  
Showers | Self closing showers

Plug chromed

2030053006  
ASSX9004



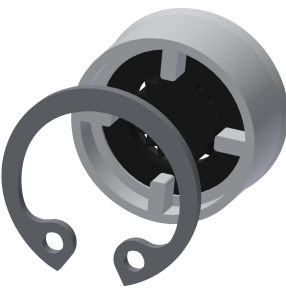
Handle push cap

2030050753  
ASSM9004



Temperature stop

2030046189  
ASSM9002



Safety ring

2030048357  
ASSX9003

Rosette

2030045510  
ASXM2003

FRAMIC self-closing mixing cartridge

2030046185  
ASSM9001

Flow controller 9,0 l/min

2000104782  
ESHHE0001