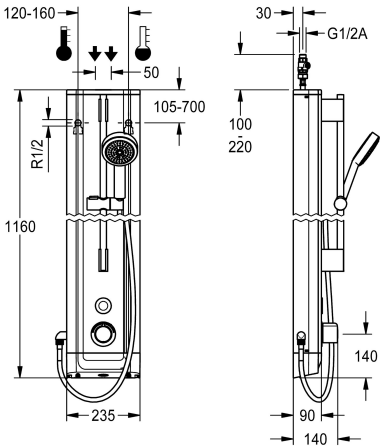


KWC F5E Therm
Stainless steel shower panel with hand shower fitting

Modell-Linie: F5E | F5ET2021
Showers | Electronic self closing shower



KWC-No.

2030056562

F5E Therm shower panel made of stainless steel for wall mounting with thermostatic mixer and a hand shower fitting. Electrically controlled, for connection to hot water and cold water. Shower valve with integrated solenoid valve cartridge, thermostat and mechanism for optional bypass solenoid valve cartridge to perform program-controlled thermal disinfection. Thermostat with metal handle, an adjustable and turn-proof temperature stop and an option for manual thermal disinfection. All-metal construction, visible parts high-polished or chrome-plated. Pre-fitted chrome-plated brass shower pole with height-adjustable hand shower holder and chrome-plated plastic hand shower, shower head with rain jet, diameter 110 mm, shower hose 900 mm. Housing made of stainless steel with raised function surface and plastic cover caps. Button sensor including control electronics with start/stop function

and deactivation for cleaning. Connecting hoses with lockable water volume control with backflow preventer and strainer. Activated water hygiene flushing 24 hours after last activation and saving of statistical data. With option for parameterization and communication via the optional bidirectional remote control. Battery operation with 6 V lithium battery (CR-P2) per fitting, separate power supply via plug-in power supply unit 6.75 V / 12 V DC or AQUA 3000 open system accessories.

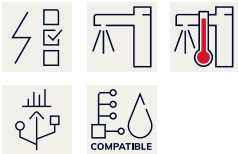
Dimensions of housing 235 x 1160 x 90 mm (W x H x D)

Battery compartment including battery or plug-in power supply unit with extension cable to be ordered separately.

Technical Data

additional connections
with backflow preventer
circulation
compatible A3000 open
connection with pay water disp
default automatic hygiene flus
default flow time
with filter
adjustable flow time
functional principle
for hand shower
hygiene flushing
diameter nominal
inlet size
Locking mechanism
material casing
material code casing
material fitting
maximum flow time
minimum flow pressure

No
Yes
No
Yes
via electronic module
24h after the last activity
30 Seconds
Yes
Yes
electronic self-closing
Yes
Yes
DN 15
G 1/2 A
Top section, non-ceramic
stainless steel
1.4301 Chrome Nickel steel V2A
brass-look
255 Seconds
1 bar



KWC F5E Therm
Stainless steel shower panel with hand shower fitting

Modell-Linie: F5E | F5ET2021
Showers | Electronic self closing shower

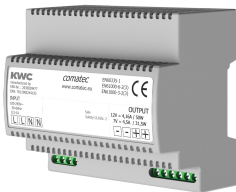
minimum flow time	1 Seconds
type of mixing	with thermostat
overall depth	90 mm
overall height	1,160 mm
overall width	235 mm
Parameterization	remote control
power supply connection	6,75 / 12 VDC / A3000 open
position of power connection	from top / backside
Type of power supply	Other
with rosettes/cover plate	Yes
protective shutdown	Yes
shower pipe draining	No
with shower set	Yes
sound insulation	No
surface finish casing	satin finished
surface finish fitting	chromed
surface treatment fitting	polished
temperature limit	Yes
thermal disinfection	Yes
with transformer/power supply	No
type of mounting	wall mounting
type of operation	sensor operation
type of sensor	opto-electronic sensor
type of shower	shower panel
water connection	hose (gland nut)
position of water connection	from top / backside
with soap dish	No
Accent colour	chrome-look (glossy)
Basic colour	stainless steel-look

Mandatory Accessories



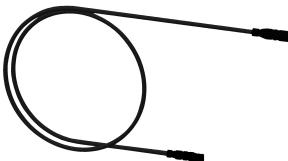
Battery compartment

3600002063
ACEX9023



Power supply unit

2030039477
ACEX9001



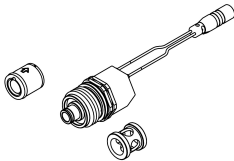
Extension cable 5 m

2030043814
ACEX9010

Optional Accessories

KWC F5E Therm
Stainless steel shower panel with hand shower fitting

Modell-Linie: F5E | F5ET2021
Showers | Electronic self closing shower



Set for thermal disinfection

2030057940
ACXT2001



Bidirectional remote control for
electronic fittings F3 and F5

2030036654
ACEX9005



2-button remote control for fittings F3
and F5

2030036849
ACEX9004



Housing extension for F5 shower
panels made of stainless steel

2030057066
ACXX2011



Housing extension for F5 shower
panels made of stainless steel

2030057067
ACXX2012



Housing extension for F5 shower
panels made of stainless steel

2030057068
ACXX2013



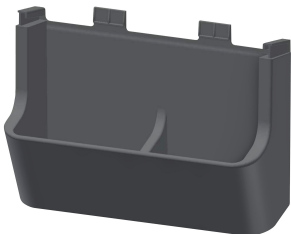
Housing extension for F5 shower
panels made of stainless steel

2030057069
ACXX2014



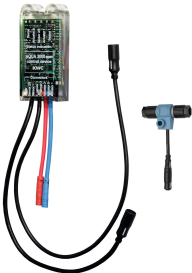
Housing extension for F5 shower
panels made of stainless steel

2030057070
ACXX2015



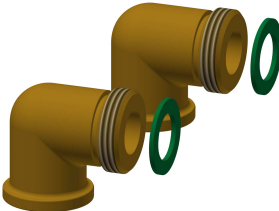
Shower gel dish for F5 shower panels
made of stainless steel

2030057077
ACXX2021



Electronic module EM5 for F5 shower
taps

2030041918
ACET2001



Connection set for shower panel

2000104916
ZSHOW0006



Connection adapter

2000101441
AQRM928

Spare Parts



KWC F5E Therm
Stainless steel shower panel with hand shower fitting

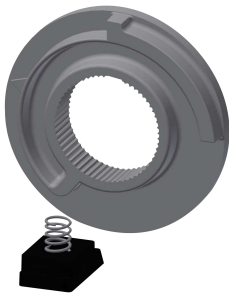
Modell-Linie: **F5E | F5ET2021**
Showers | Electronic self closing shower



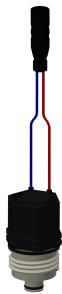
Cover
2030031443
ESHOW0059



Temperature handle
2030047082
ASXT9003



Temperature stop
2030003296
EAQLT0003



Solenoid valve cartridge
2030003033
EAQFU0001



Hand shower
2030051216
ACXX2007



Stainless steel care set
2000109019
ZWSPL0024



Cleaning product CHROMOL
2000105091
ZWSPL0023