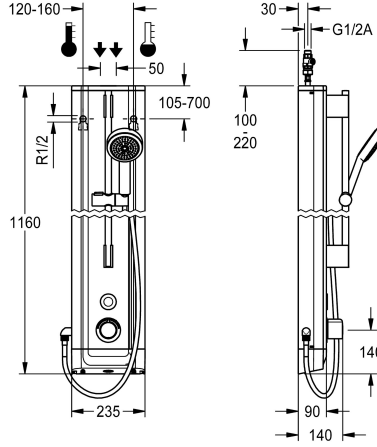


## KWC F5E Therm Stainless steel shower panel with hand shower fitting

Modell-Linie: F5E | F5ET2021  
Showers | Electronic self closing shower



### KWC-No.

2030056562

F5E Therm shower panel made of stainless steel for wall mounting with thermostatic mixer and a hand shower fitting. Electrically controlled, for connection to hot water and cold water. Shower valve with integrated solenoid valve cartridge, thermostat and mechanism for optional bypass solenoid valve cartridge to perform program-controlled thermal disinfection. Thermostat with metal handle, an adjustable and turn-proof temperature stop and an option for manual thermal disinfection. All-metal construction, visible parts high-polished or chrome-plated. Pre-fitted chrome-plated brass shower pole with height-adjustable hand shower holder and chrome-plated plastic hand shower, shower head with rain jet, diameter 110 mm, shower hose 900 mm. Housing made of stainless steel with raised function surface and plastic cover caps. Button sensor including control electronics with start/stop function

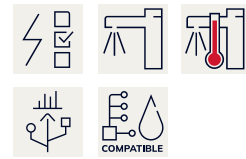
and deactivation for cleaning. Connecting hoses with lockable water volume control with backflow preventer and strainer. Activated water hygiene flushing 24 hours after last activation and saving of statistical data. With option for parameterization and communication via the optional bidirectional remote control. Battery operation with 6 V lithium battery (CR-P2) per fitting, separate power supply via plug-in power supply unit 6.75 V / 12 V DC or AQUA 3000 open system accessories.

Dimensions of housing 235 x 1160 x 90 mm (W x H x D)

Battery compartment including battery or plug-in power supply unit with extension cable to be ordered separately.

### Technical Data

additional connections	no
with backflow preventer	yes
circulation	no
compatible A3000 open	yes
connection with pay water disp	via electronic module
default automatic hygiene flus	24h after the last activity
default flow time	30 Seconds
with filter	yes
adjustable flow time	yes
functional principle	electronic self-closing
for hand shower	yes
hygiene flushing	yes
diameter nominal	DN 15
inlet size	G 1/2 A
Locking mechanism	Top section, non-ceramic
material casing	stainless steel
material code casing	1.4301 Chrome Nickel steel V2A
material fitting	brass
maximum flow time	255 Seconds
minimum flow pressure	1 bar



## KWC F5E Therm

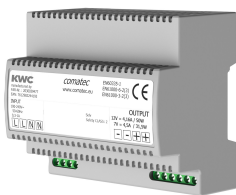
Stainless steel shower panel with hand shower fitting

**Modell-Linie: F5E | F5ET2021**

Showers | Electronic self closing shower

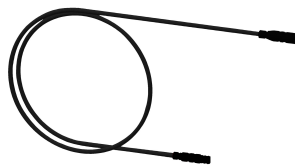
minimum flow time	1 Seconds
type of mixing	with thermostat
overall depth	90 mm
overall height	1,160 mm
overall width	235 mm
Parameterization	remote control
power supply connection	6,75 / 12 VDC / A3000 open
position of power connection	from top / backside
Type of power supply	Other
with rosettes/cover plate	yes
protective shutdown	yes
shower pipe draining	no
with shower set	yes
sound insulation	no
surface finish casing	satin finished
surface finish fitting	chromed
surface treatment fitting	polished
temperature limit	yes
thermal disinfection	yes
with transformer/power supply	no
type of mounting	wall mounting
type of operation	sensor operation
type of sensor	opto-electronic sensor
type of shower	shower panel
water connection	hose (gland nut)
position of water connection	from top / backside
with soap dish	no
Accent colour	chrome-look (glossy)
Basic colour	stainless steel

### Mandatory Accessories



**Power supply unit**

**2030039477**  
ACEX9001



**Extension cable 5 m**

**2030043814**  
ACEX9010

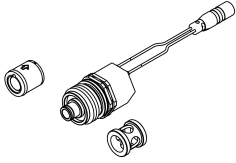
### Optional Accessories

## KWC F5E Therm

Stainless steel shower panel with hand shower fitting

Modell-Linie: F5E | F5ET2021

Showers | Electronic self closing shower



Set for thermal disinfection

**2030057940**  
ACXT2001



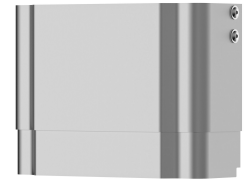
Bidirectional remote control for electrical fittings F3 and F5

**2030036654**  
ACEX9005



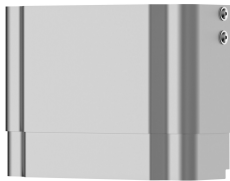
2-button remote control for fittings F3 and F5

**2030036849**  
ACEX9004



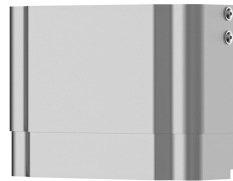
Housing extension for F5 shower panels made of stainless steel

**2030057066**  
ACXX2011



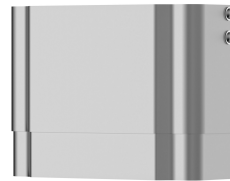
Housing extension for F5 shower panels made of stainless steel

**2030057067**  
ACXX2012



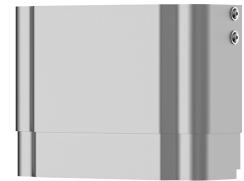
Housing extension for F5 shower panels made of stainless steel

**2030057068**  
ACXX2013



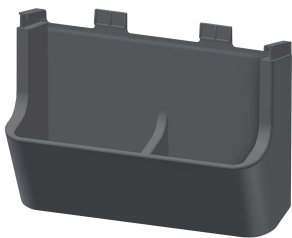
Housing extension for F5 shower panels made of stainless steel

**2030057069**  
ACXX2014



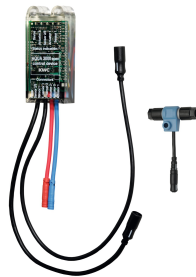
Housing extension for F5 shower panels made of stainless steel

**2030057070**  
ACXX2015



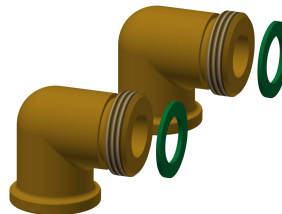
Shower gel dish for F5 shower panels made of stainless steel

**2030057077**  
ACXX2021



Electronic module EM5 for F5 shower taps

**2030041918**  
ACET2001



Connection set for shower panel

**2000104916**  
ZSHOW0006



Connection adapter

**2000101441**  
AQRM928

## Spare Parts

## KWC F5E Therm

Stainless steel shower panel with hand shower fitting

Modell-Linie: F5E | F5ET2021

Showers | Electronic self closing shower



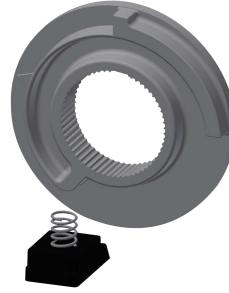
Cover

**2030031443**  
ESHOW0059



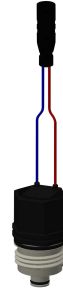
Temperature handle

**2030047082**  
ASXT9003



Temperature stop

**2030003296**  
EAQLT0003



Solenoid valve cartridge

**2030003033**  
EAQFU0001



Hand shower

**2030051216**  
ACXX2007



Stainless steel care set

**2000109019**  
ZW SPL0024



Cleaning product CHROMOL

**2000105091**  
ZW SPL0023