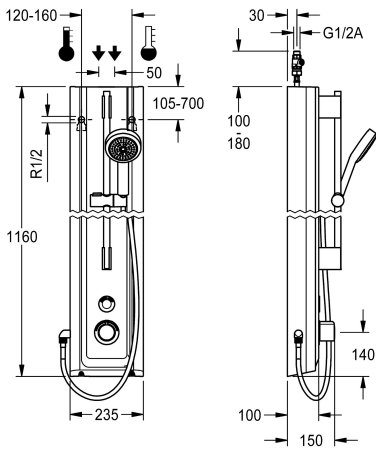


KWC F5E-Therm
Shower panel made of MIRANIT with hand shower fitting

Modell-Linie: F5E | F5ET2025
Showers | Electronic self closing shower



KWC-No.

2030056573

F5E Therm shower panel made of mineral material for wall mounting with thermostatic mixer and a hand shower fitting. Electrically controlled, for connection to hot water and cold water. Shower valve with integrated solenoid valve cartridge, thermostat and mechanism for optional bypass solenoid valve cartridge to perform program-controlled thermal disinfection. Thermostat with metal handle, an adjustable and turn-proof temperature stop and an option for manual thermal disinfection. All-metal construction, visible parts high-polished or chrome-plated. Pre-fitted chrome-plated brass shower pole with height-adjustable hand shower holder and chrome-plated plastic hand shower, shower head with rain jet, diameter 110 mm, shower hose 900 mm. Housing with raised function surface made of MIRANIT resin-bonded mineral material with pore-free smooth surface (temperature-resistant up to 80 °C),

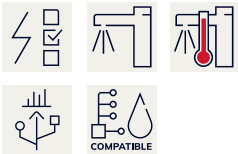
Alpine white colour. Button sensor including control electronics with start/stop function and deactivation for cleaning. Connecting hoses with lockable water volume control with backflow preventer and strainer. Activated water hygiene flushing 24 hours after last activation and saving of statistical data. With option for parameterization and communication via the optional bidirectional remote control. Battery operation with 6 V lithium battery (CR-P2) per fitting, separate power supply via plug-in power supply unit 6.75 V/12 V DC or AQUA 3000 open system accessories.

Dimensions of housing 235 x 1160 x 100 mm (W x H x D)

Battery compartment including battery or plug-in power supply unit with extension cable to be ordered separately.

Technical Data

additional connections	No
with backflow preventer	Yes
circulation	No
compatible A3000 open	Yes
connection with pay water disp	via electronic module
default automatic hygiene flus	24h after the last activity
default flow time	30 Seconds
with filter	Yes
adjustable flow time	Yes
functional principle	electronic self-closing
for hand shower	Yes
hygiene flushing	Yes
diameter nominal	DN 15
inlet size	G 1/2 A
Locking mechanism	Top section, non-ceramic
material casing	mineral material
material code casing	Miranit
material fitting	brass-look
maximum flow time	255 Seconds
minimum flow pressure	1 bar



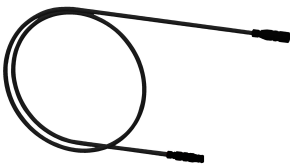
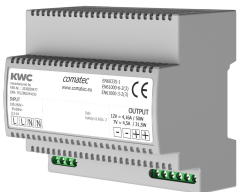


KWC F5E-Therm
Shower panel made of MIRANIT with hand shower fitting

Modell-Linie: F5E | F5ET2025
Showers | Electronic self closing shower

minimum flow time	1 Seconds
type of mixing	with thermostat
overall depth	100 mm
overall height	1,160 mm
overall width	235 mm
Parameterization	remote control
power supply connection	6,75 / 12 VDC / A3000 open
position of power connection	from top / backside
Type of power supply	Other
with rosettes/cover plate	Yes
protective shutdown	Yes
shower pipe draining	No
with shower set	Yes
sound insulation	No
surface finish fitting	chromed
surface treatment fitting	polished
temperature limit	Yes
thermal disinfection	Yes
with transformer/power supply	No
type of mounting	wall mounting
type of operation	sensor operation
type of sensor	opto-electronic sensor
type of shower	shower panel
water connection	hose (gland nut)
position of water connection	from top / backside
with soap dish	No
Accent colour	chrome-look (glossy)
Basic colour	white

Mandatory Accessories



Battery compartment

3600002063
ACEX9023

Power supply unit

2030039477
ACEX9001

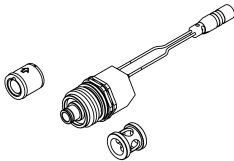
Extension cable 5 m

2030043814
ACEX9010

Optional Accessories

KWC F5E-Therm
Shower panel made of MIRANIT with hand shower fitting

Modell-Linie: F5E | F5ET2025
Showers | Electronic self closing shower



Set for thermal disinfection

2030057940
ACXT2001



Bidirectional remote control for
electronical fittings F3 and F5

2030036654
ACEX9005



2-button remote control for fittings F3
and F5

2030036849
ACEX9004



Housing extension for F5 shower
panels made of MIRANIT

2030057071
ACXX2016



Housing extension for F5 shower
panels made of MIRANIT

2030057072
ACXX2017



Housing extension for F5 shower
panels made of MIRANIT

2030057073
ACXX2018



Housing extension for F5 shower
panels made of MIRANIT

2030057075
ACXX2019



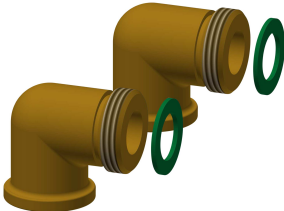
Housing extension for F5 shower
panels made of MIRANIT

2030057076
ACXX2020



Electronic module EM5 for F5 shower
taps

2030041918
ACET2001



Connection set for shower panel

2000104916
ZSHOW0006



Connection adapter

2000101441
AQRM928

Spare Parts



KWC F5E-Therm
Shower panel made of MIRANIT with hand shower fitting

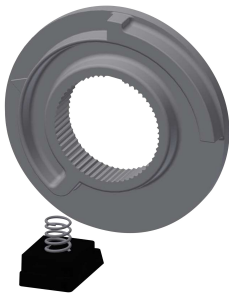
Modell-Linie: F5E | F5ET2025
Showers | Electronic self closing shower



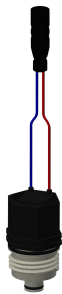
Cover
2030031443
ESHOW0059



Temperature handle
2030047082
ASXT9003



Temperature stop
2030003296
EAQLT0003



Solenoid valve cartridge
2030003033
EAQFU0001



Hand shower
2030051216
ACXX2007