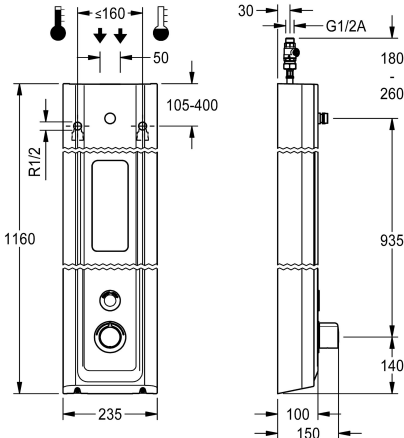


KWC F5E-Therm  
Shower panel made of MIRANIT with shower gel shelf

Modell-Linie: F5E | F5ET2026  
Showers | Electronic self closing shower



KWC-No.

2030056574

F5E Therm shower panel made of mineral material for wall mounting with thermostatic mixer and connecting nozzles for the shower head. Electrically controlled, for connection to hot water and cold water. Shower valve with integrated solenoid valve cartridge, thermostat and mechanism for optional bypass solenoid valve cartridge to perform program-controlled thermal disinfection. Thermostat with metal handle, an adjustable and turn-proof temperature stop and an option for manual thermal disinfection. All-metal construction, visible parts high-polished or chrome-plated. Connecting nozzles for the required additional DN 15 KWC shower head with pre-fitted flow regulator 9.0 l/min. Housing with raised function surface and seamless moulded shower gel shelf made of MIRANIT resin-bonded mineral material with pore-free smooth surface (temperature-resistant up to 80 °C), Alpine white colour.

Button sensor including control electronics with start/stop function and deactivation for cleaning. Connecting hoses with lockable water volume control with backflow preventer and strainer. Activated water hygiene flushing 24 hours after last activation and saving of statistical data. With option for parameterization and communication via the optional bidirectional remote control. Battery operation with 6 V lithium battery (CR-P2) per fitting, separate power supply via plug-in power supply unit 6.75 V/12 V DC or AQUA 3000 open system accessories.

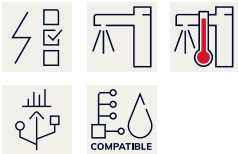
Dimensions of housing 235 x 1160 x 100 mm (W x H x D)

Shower head and battery compartment including battery or plug-in power supply unit with extension cable to be ordered separately.

Technical Data

|                                |
|--------------------------------|
| additional connections         |
| with backflow preventer        |
| circulation                    |
| compatible A3000 open          |
| connection with pay water disp |
| default automatic hygiene flus |
| default flow time              |
| with filter                    |
| adjustable flow time           |
| functional principle           |
| for hand shower                |
| hygiene flushing               |
| diameter nominal               |
| inlet size                     |
| Locking mechanism              |
| material casing                |
| material code casing           |
| material fitting               |
| maximum flow time              |
| minimum flow pressure          |

|                             |
|-----------------------------|
| No                          |
| Yes                         |
| No                          |
| Yes                         |
| via electronic module       |
| 24h after the last activity |
| 30 Seconds                  |
| Yes                         |
| Yes                         |
| electronic self-closing     |
| No                          |
| Yes                         |
| DN 15                       |
| G 1/2 A                     |
| Top section, non-ceramic    |
| mineral material            |
| Miranit                     |
| brass-look                  |
| 255 Seconds                 |
| 1.5 bar                     |



KWC F5E-Therm  
Shower panel made of MIRANIT with shower gel shelf

Modell-Linie: F5E | F5ET2026  
Showers | Electronic self closing shower

|                               |                             |
|-------------------------------|-----------------------------|
| minimum flow time             | 1 Seconds                   |
| type of mixing                | with thermostat             |
| overall depth                 | 100 mm                      |
| overall height                | 1,160 mm                    |
| overall width                 | 235 mm                      |
| Parameterization              | remote control              |
| power supply connection       | 6,75 / 12 V DC / A3000 open |
| position of power connection  | from top / backside         |
| Type of power supply          | Other                       |
| with rosettes/cover plate     | Yes                         |
| protective shutdown           | Yes                         |
| shower pipe draining          | No                          |
| Shower head                   | for separately shower head  |
| with shower set               | No                          |
| sound insulation              | No                          |
| surface finish fitting        | chromed                     |
| surface treatment fitting     | polished                    |
| temperature limit             | Yes                         |
| thermal disinfection          | Yes                         |
| with transformer/power supply | No                          |
| type of mounting              | wall mounting               |
| type of operation             | sensor operation            |
| type of sensor                | opto-electronic sensor      |
| type of shower                | shower panel                |
| volume flow rate at 3 bar     | 0.15 l/s                    |
| water connection              | hose (gland nut)            |
| position of water connection  | from top / backside         |
| with soap dish                | integrated                  |
| Accent colour                 | chrome-look (glossy)        |
| Basic colour                  | white                       |

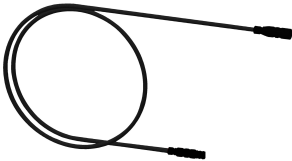
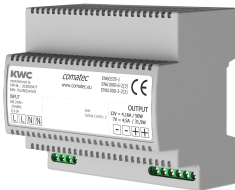
Mandatory Accessories

|  |   |  |   |
|--|---|--|---|
|  |  |  |  |
| AQUAJET-Slimline shower head for KWC shower panels and systems                     | AQUAJET-Comfort shower head for KWC shower panels and systems                       | MÜNCHEN shower head for KWC shower panels and systems                                | Battery compartment   |
| 2030054255<br>SHAS0011   | 2030054254<br>SHAC0011  | 2030054793<br>SHMU0011   | 3600002063<br>ACEX9023  |



**KWC F5E-Therm**  
Shower panel made of MIRANIT with shower gel shelf

**Modell-Linie: F5E | F5ET2026**  
Showers | Electronic self closing shower



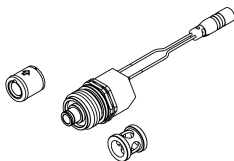
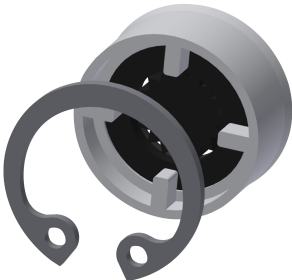
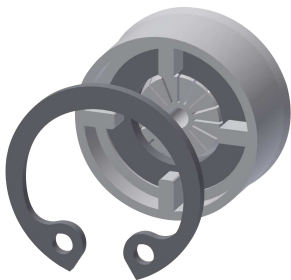
Power supply unit

**2030039477**  
ACEX9001

Extension cable 5 m

**2030043814**  
ACEX9010

Optional Accessories



Flow controller 6.0 l/min

**2030027586**  
ESHHE0004

Flow controller 12.0 l/min

**2000104783**  
ESHHE0002

Set for thermal disinfection

**2030057940**  
ACXT2001

Bidirectional remote control for electronic fittings F3 and F5

**2030036654**  
ACEX9005



2-button remote control for fittings F3 and F5

**2030036849**  
ACEX9004

Housing extension for F5 shower panels made of MIRANIT

**2030057071**  
ACXX2016

Housing extension for F5 shower panels made of MIRANIT

**2030057072**  
ACXX2017

Housing extension for F5 shower panels made of MIRANIT

**2030057073**  
ACXX2018



**KWC F5E-Therm**  
Shower panel made of MIRANIT with shower gel shelf

**Modell-Linie: F5E | F5ET2026**  
Showers | Electronic self closing shower



**Housing extension for F5 shower panels made of MIRANIT**

**2030057075**  
ACXX2019



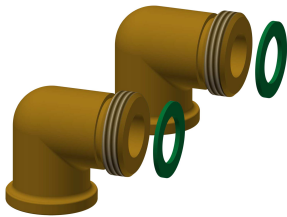
**Housing extension for F5 shower panels made of MIRANIT**

**2030057076**  
ACXX2020



**Electronic module EM5 for F5 shower taps**

**2030041918**  
ACET2001



**Connection set for shower panel**

**2000104916**  
ZSHOW0006



**Connection adapter**

**2000101441**  
AQRM928

**Spare Parts**



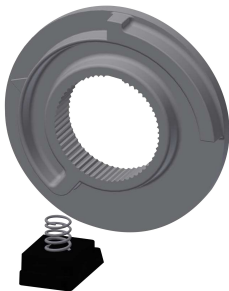
**Cover**

**2030031443**  
ESHOW0059



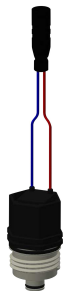
**Temperature handle**

**2030047082**  
ASXT9003



**Temperature stop**

**2030003296**  
EAQLT0003



**Solenoid valve cartridge**

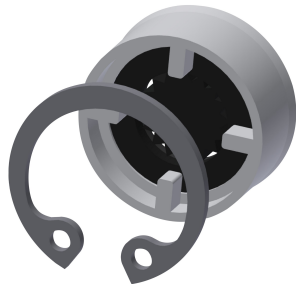
**2030003033**  
EAQFU0001

## KWC F5E-Therm

Shower panel made of MIRANIT with shower gel shelf

**Modell-Linie: F5E | F5ET2026**

Showers | Electronic self closing shower



**Flow controller 9,0 l/min**

**2000104782**

ESHHE0001