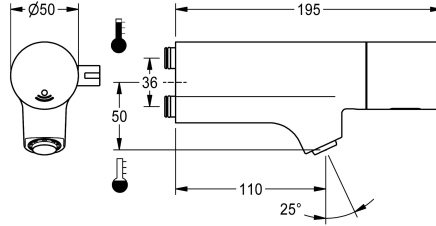


## KWC F5E-Mix

Electronic washbasin mixer for fitting unit or wall flange

Modell-Linie: F5E | F5EM1015

Taps | Electronic taps



### KWC-No.

**2030058995**

F5E-Mix Electronic washbasin mixer

F5E-Mix Washbasin mixer DN 15 with angled outlet for installation on fitting units or separate wall flanges, for sanitary facilities. Opto-electronic control, activation on hand reflection. For connection to hot and cold water. Control electronics, solenoid valve cartridge, 6 V lithium battery (CR-P2) and sensor in all-metal housing, high-polished chrome-plated brass. Temperature lever with adjustable, turn-proof temperature stop. Anti-theft aerator, SLIM design, with

integrated flow regulator 5.0 l/min. Connections positioned above one another with backflow preventers. Activated water hygiene flushing 24 hours after last activation, safety switch-off for continuous reflexion and saving of statistical data. With option for parameterization and communication via optional, bidirectional remote control.

### Technical Data

with backflow preventer

yes

compatible A3000 open

no

default automatic hygiene flush

24h after the last activity

depressurised

no

with filter

yes

adjustable flow time

yes

functional principle

electronic self-closing

hygiene flushing

yes

diameter nominal

DN 15

Locking mechanism

Top section, non-ceramic

material fitting

brass-lock

minimum flow pressure

1 bar

type of mixing

yes

number of batteries

1

Parameterization

remote control

Pop-up waste set

no

power supply connection

Battery 6 V

Type of power supply

Battery

with rosettes/cover plate

no

protective shutdown

yes

sound insulation

no

Spout

fixed

spout projection

110 mm

surface finish fitting

chromed



## KWC F5E-Mix

Electronic washbasin mixer for fitting unit or wall flange

**Modell-Linie: F5E | F5EM1015**

Taps | Electronic taps

surface treatment fitting	polished
temperature limit	yes
thermal disinfection	automatic thermal disinfection
with transformer/power supply	no
type of batteries	CR-P2 Lithium battery 6V
type of mounting	mounted on product
type of operation	sensor operation
type of sensor	opto-electronic sensor
type of tap	for fitting unit
volume flow rate at 3 bar	0.08 l/s
water connection	plug connection
Accent colour	none
Basic colour	chrome-look (glossy)

### Mandatory Accessories



#### Wall flange

**2030058762**  
ACXM1002



#### Single clamping bridge

**2030058826**  
ACXM1003



#### Double clamping bridge

**2030059971**  
ACXM1004

### Optional Accessories



#### Bidirectional remote control for electronic fittings F3 and F5

**2030036654**  
ACEX9005



#### 2-button remote control for fittings F3 and F5

**2030036849**  
ACEX9004



#### 5.0 l/min aerator, angle-adjustable

**2030041326**  
ACXX1002



#### 3.0 l/min. aerator

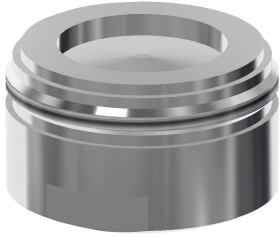
**2030041424**  
ASXX1008

## KWC F5E-Mix

Electronic washbasin mixer for fitting unit or wall flange

Modell-Linie: F5E | F5EM1015

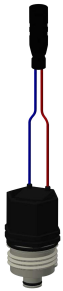
Taps | Electronic taps



### Aerator 1.8 l/min

**2030041442**  
ACXX1005

### Spare Parts



### Solenoid valve cartridge

**2030045522**  
ACXX9002



### Lithium battery 6 V

**2000104846**  
EPRTR0008



### F5 Foil

**2030053034**  
ASET2010



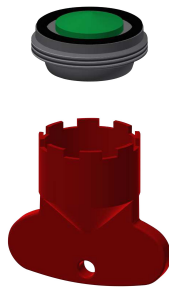
### Battery compartment

**3600002063**  
ACEX9023



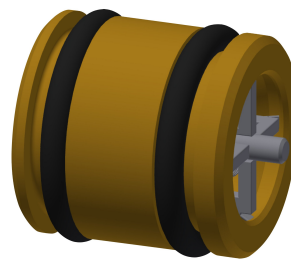
### Mounting key

**2030041329**  
ACXX1003



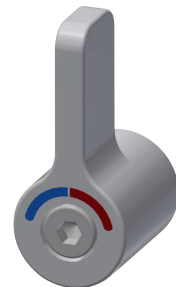
### Aerator 5.0 l/min

**2030041011**  
ASXX1004



### Guide bushing

**2030023924**  
ETAPS0040



### Temperature selection lever

**2030041431**  
ASEM1001

## KWC F5E-Mix

Electronic washbasin mixer for fitting unit or wall flange

**Modell-Linie: F5E | F5EM1015**

Taps | Electronic taps



### Hexagonal socket wrench

---

**2030047722**

ACEX9011

---