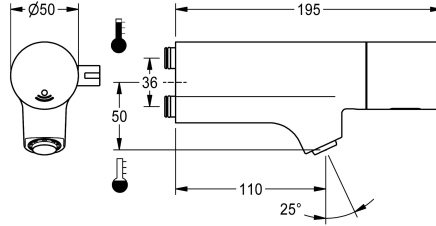


KWC F5E-Mix

Electronic washbasin mixer for fitting unit or wall flange

Modell-Linie: F5E | F5EM1015

Taps | Electronic taps



KWC-No.

2030058995

F5E-Mix Electronic washbasin mixer

F5E-Mix Washbasin mixer DN 15 with angled outlet for installation on fitting units or separate wall flanges, for sanitary facilities. Opto-electronic control, activation on hand reflection. For connection to hot and cold water. Control electronics, solenoid valve cartridge, 6 V lithium battery (CR-P2) and sensor in all-metal housing, high-polished chrome-plated brass. Temperature lever with adjustable, turn-proof temperature stop. Anti-theft aerator, SLIM design, with

integrated flow regulator 5.0 l/min. Connections positioned above one another with backflow preventers. Activated water hygiene flushing 24 hours after last activation, safety switch-off for continuous reflexion and saving of statistical data. With option for parameterization and communication via optional, bidirectional remote control.

Technical Data

with backflow preventer

yes

compatible A3000 open

no

default automatic hygiene flush

24h after the last activity

depressurised

no

with filter

yes

adjustable flow time

yes

functional principle

electronic self-closing

hygiene flushing

yes

diameter nominal

DN 15

Locking mechanism

Top section, non-ceramic

material fitting

brass

minimum flow pressure

1 bar

type of mixing

yes

number of batteries

1

Parameterization

remote control

Pop-up waste set

no

power supply connection

Battery 6 V

Type of power supply

Battery

with rosettes/cover plate

no

protective shutdown

yes

sound insulation

no

Spout

fixed

spout projection

110 mm

surface finish fitting

chromed



KWC F5E-Mix

Electronic washbasin mixer for fitting unit or wall flange

Modell-Linie: F5E | F5EM1015

Taps | Electronic taps

surface treatment fitting	polished
temperature limit	yes
thermal disinfection	automatic thermal disinfection
with transformer/power supply	no
type of batteries	CR-P2 Lithium battery 6V
type of mounting	mounted on product
type of operation	sensor operation
type of sensor	opto-electronic sensor
type of tap	for fitting unit
volume flow rate at 3 bar	0.08 l/s
water connection	plug connection
Accent colour	none
Basic colour	chrome-look (glossy)

Mandatory Accessories



Wall flange

2030058762
ACXM1002



Single clamping bridge

2030058826
ACXM1003



Double clamping bridge

2030059971
ACXM1004

Optional Accessories



Bidirectional remote control for electronic fittings F3 and F5

2030036654
ACEX9005



2-button remote control for fittings F3 and F5

2030036849
ACEX9004



5.0 l/min aerator, angle-adjustable

2030041326
ACXX1002



3.0 l/min. aerator

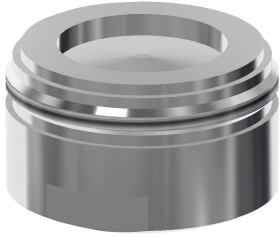
2030041424
ASXX1008

KWC F5E-Mix

Electronic washbasin mixer for fitting unit or wall flange

Modell-Linie: F5E | F5EM1015

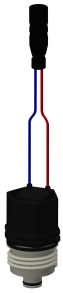
Taps | Electronic taps



Aerator 1.8 l/min

2030041442
ACXX1005

Spare Parts



Solenoid valve cartridge

2030045522
ACXX9002



Lithium battery 6 V

2000104846
EPRTR0008



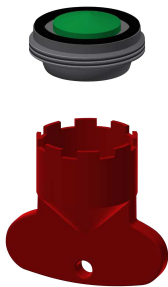
F5 Foil

2030053034
ASET2010



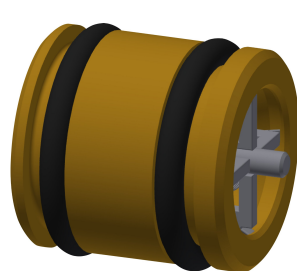
Mounting key

2030041329
ACXX1003



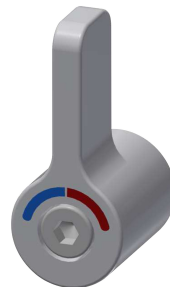
Aerator 5.0 l/min

2030041011
ASXX1004



Guide bushing

2030023924
ETAPS0040



Temperature selection lever

2030041431
ASEM1001



Hexagonal socket wrench

2030047722
ACEX9011