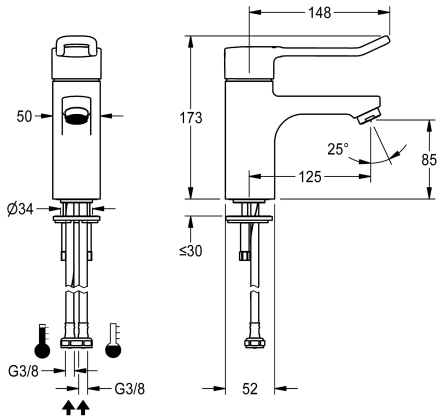


KWC F5L-Therm  
Thermostatic single-lever pillar mixer, barrier-free

Modell-Linie: F5L | F5LT1010  
Taps | Manual taps



KWC-No.

2030066301

2030066489

With connection pipes

water connection

hose (gland nut)

pipe

F5L-Therm thermostatic single-lever mixer as DN 15 pillar mixer for accessible sanitary facilities, lever length 150 mm. Thermostatically-controlled mixer cartridge with expansion element and active scald protection as well as adjustable and turn-proof temperature stop, and ceramic disc technology. With mechanism for optional hygiene unit for automatic hygiene flushing and program-controlled thermal disinfection and storage of statistical

data. Lever cap in ergonomic bracket design, with slight curvature in the front and basalt-grey coating, in line with two-senses principle (tactile and visual). For connection to hot water and cold water via hoses, includes strainers. All-metal construction, high-polished chrome-plated brass. Laminar jet regulator with integrated flow rate

Technical Data

|                                |
|--------------------------------|
| with backflow preventer        |
| calculation flow rate cold wat |
| calculation flow rate hot wate |
| depressurised                  |
| with filter                    |
| functional principle           |
| hygiene flushing               |
| diameter nominal               |
| inlet size                     |
| Locking mechanism              |
| material fitting               |
| minimum flow pressure          |
| type of mixing                 |
| Pop-up waste set               |
| with rosettes/cover plate      |
| protective shutdown            |
| sound insulation               |
| Spout                          |
| spout projection               |
| surface finish fitting         |
| surface treatment fitting      |
| temperature limit              |

|                      |
|----------------------|
| no                   |
| 0.07 l/s             |
| 0.07 l/s             |
| no                   |
| yes                  |
| manual               |
| prepared             |
| DN 15                |
| G 3/8                |
| Top section, ceramic |
| brass                |
| 1 bar                |
| with thermostat      |
| no                   |
| no                   |
| no                   |
| no                   |
| fixed                |
| 125 mm               |
| chromed              |
| polished             |
| yes                  |





**KWC** F5L-Therm  
Thermostatic single-lever pillar mixer, barrier-free

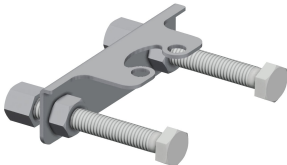
**Modell-Linie:** F5L | F5LT1010  
Taps | Manual taps

|                           |                      |
|---------------------------|----------------------|
| thermal disinfection      | yes                  |
| type of mounting          | tap hole             |
| type of operation         | manual operation     |
| type of tap               | pillar tap           |
| volume flow rate at 3 bar | 0.1 l/s              |
| water connection          | hose (gland nut)     |
| Accent colour             | none                 |
| Basic colour              | chrome-look (glossy) |

**Optional Accessories**



**Socket for F5L single-lever pillar mixer**  
**2030041325**  
ACLM1010



**Anti-twist protection**  
**2030041324**  
ACLM1009



**Hygiene unit for F5L single lever mixers**  
**2030068986**  
ACLX1003



**Hygiene unit for in-wall installation for F5L single lever mixers**  
**2030068988**  
ACLX1007