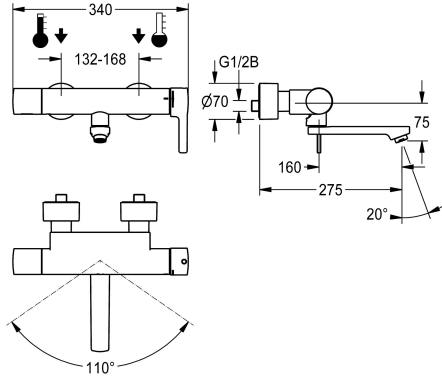


KWC F5L-Therm Thermostatic single-lever wall-mounted mixer

Modell-Linie: F5L | F5LT1014
Taps | Manual taps



KWC-No.

2030066491
Projection 215 mm

2030066490
Projection 155 mm

2030066492
Projection 275 mm

spout projection

100 mm

40 mm

160 mm

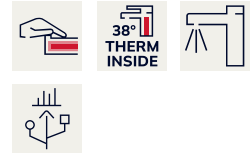
F5L-Therm thermostatic single-lever mixer as DN 15 wall-mounted mixer for wall mounting with lockable swivelling spout, for sanitary facilities. Thermostatically-controlled mixer cartridge with expansion element and active scald protection as well as adjustable and turn-proof temperature stop, and ceramic disc technology. With pre-assembled hygiene unit including 6 V lithium battery (CR P2) for automatic hygiene flushing and program-controlled thermal disinfection (additional bypass solenoid-operated flush valve cartridge necessary) and storage of statistical

data. For connection to hot and cold water. Scald-protection, safe-touch housing, all-metal construction, high-polished chrome-plated brass. Laminar jet controller with integrated flow rate controller 6.0 l/min. With adjustable and lockable connections with backflow preventers and strainers, fully covered by depth-adjustable screw rosettes. Projection 275 mm. Activated hygiene flushing, fixed interval of 24 hours. With option for parameterization and communication via optional, bidirectional remote control.

Technical Data

| |
|--------------------------------|
| with backflow preventer |
| calculation flow rate cold wat |
| calculation flow rate hot wate |
| default automatic hygiene flus |
| depressurised |
| with filter |
| adjustable flow time |
| functional principle |
| hygiene flushing |
| diameter nominal |
| inlet size |
| Locking mechanism |
| material fitting |
| minimum flow pressure |
| type of mixing |
| number of batteries |
| overall depth |
| overall width |
| Parameterization |
| Pop-up waste set |

| |
|-------------------------|
| yes |
| 0.07 l/s |
| 0.07 l/s |
| fixed interval 24 hours |
| no |
| yes |
| no |
| manual |
| yes |
| DN 15 |
| G 1/2 B |
| Top section, ceramic |
| brass-look |
| 1 bar |
| with thermostat |
| 1 |
| 275 mm |
| 340 mm |
| remote control |
| no |



KWC F5L-Therm

Thermostatic single-lever wall-mounted mixer

Modell-Linie: F5L | F5LT1014

Taps | Manual taps

| | |
|--------------------------------|--------------------------|
| power supply connection | Battery 6 V |
| power consumption | 1.5 Voltampere |
| Type of power supply | Battery |
| protective system IP | IP59K |
| with rosettes/cover plate | yes |
| protective shutdown | no |
| sound insulation | no |
| Spout | rotating, bottom |
| spout projection | 160 mm |
| surface finish casing | chromed |
| surface finish fitting | chromed |
| surface treatment fitting | polished |
| temperature limit | yes |
| thermal disinfection | yes |
| with transformer/power supply | no |
| type of batteries | CR-P2 Lithium battery 6V |
| type of mounting | wall mounting |
| type of operation | manual operation |
| type of sensor | opto-electronic sensor |
| type of tap | bib tap |
| Volume flow rate hygiene flush | 0.05 l/s |
| volume flow rate at 3 bar | 0.1 l/s |
| water connection | S-unions |
| Accent colour | none |
| Basic colour | chrome-look (glossy) |

Optional Accessories



Bidirectional remote control for electrical fittings F3 and F5

2030036654
ACEX9005



2-button remote control for fittings F3 and F5

2030036849
ACEX9004



Solenoid valve cartridge

2030045522
ACXX9002



Theft-proof housing for aerator

2000104778
ZTAPS0005

Spare Parts

KWC F5L-Therm

Thermostatic single-lever wall-mounted mixer

Modell-Linie: F5L | F5LT1014

Taps | Manual taps



Swivel spout, 160 mm

2030032815
ASXX1002



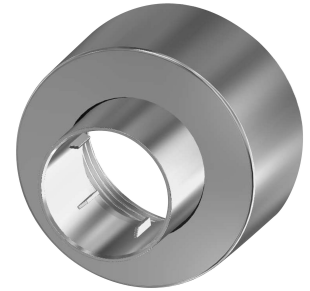
Laminar jet regulator

2030012352
ETAPS0037



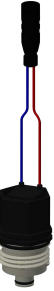
Mounting set

2030003401
EAQLT0009



Screw rosette

2030046777
ASXX9003



Solenoid valve cartridge

2030045522
ACXX9002



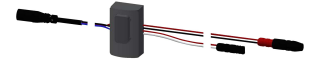
Battery compartment

3600002063
ACEX9023



Lithium battery 6 V

2000104846
EPRTR0008



Sensor, ID 81/00001

2030041485
ASLM9001



F5 Foil

2030053034
ASET2010