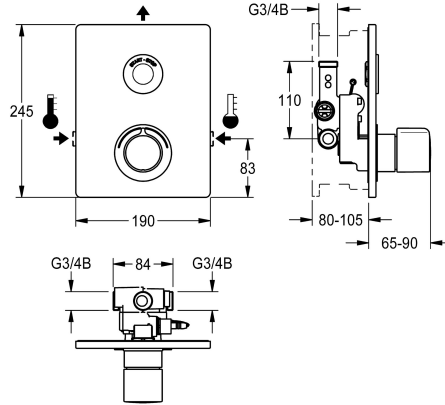


## KWC F5E-Therm Electronic thermostatic in-wall mixer

**Modell-Linie: F5E | F5ET2031**  
Showers | Electronic self closing shower



### KWC-No.

**2030067151**

F5E-Therm thermostatic mixer DN 15 as finished installation kit for wall mounting in mounting material, for shower facilities. Electrically controlled, connects to hot water and cold water. Function block with integrated solenoid valve cartridge, thermostat and mechanism for two optional bypass solenoid valve cartridges for separate rinsing of the cold-water line and implementation of program-controlled thermal disinfection as well as for separate sampling of cold or hot water. Thermostat with metal handle with adjustable and turn-proof temperature stop and option for manual thermal disinfection. All-metal construction, visible parts high-polished, chrome-plated. With holding frame and profile seal, stainless-steel cover plate 190 x 245 mm with covered screw fixing including sensor with control

electronics, rosette, backflow preventers and strainers. Depth adjustability 25 mm. Activated hygiene flushing 24 hours after last activation and storage of statistical data. With option for parameterization and communication via optional, bidirectional remote control.

Optionally for battery operation with 6 V lithium battery (CR-P2) per fitting or separate power supply via power supply unit 6.75 V/12 V DC or AQUA 3000 open system accessories.

Battery compartment including battery or power supply unit with extension cable must be ordered separately.

### Technical Data

additional connections

no

with backflow preventer

yes

Built-in fitting model

Finishing section

calculation flow rate cold wat

0.15 l/s

calculation flow rate hot water

0.15 l/s

circulation

no

compatible A3000 open

yes

connection with pay water disp

via electronic module

Cover plate height

245 mm

Cover plate width

190 mm

default automatic hygiene flus

24h after the last activity

default flow time

30 Seconds

with filter

yes

adjustable flow time

yes

functional principle

electronic self-closing

for hand shower

no

hygiene flushing

yes

diameter nominal

DN 15

inlet size

G 3/4 B

Locking mechanism

Top section, non-ceramic

material casing

stainless steel

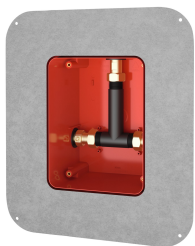


## KWC F5E-Therm Electronic thermostatic in-wall mixer

**Modell-Linie: F5E | F5ET2031**  
Showers | Electronic self closing shower

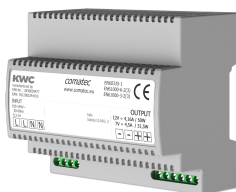
material fitting	brass
maximum flow time	255 Seconds
minimum flow pressure	1 bar
minimum flow time	1 Seconds
type of mixing	with thermostat
Parameterization	remote control
power supply connection	6,75 / 12 VDC / A3000 open
position of power connection	from top
power consumption	1.5 Voltampere
Type of power supply	Transformer
with rosettes/cover plate	yes
protective shutdown	yes
shower pipe draining	no
sound insulation	no
surface finish casing	satin finished
surface finish fitting	chromed
surface treatment fitting	polished
temperature limit	yes
thermal disinfection	yes
with transformer/power supply	no
type of mounting	in-wall installation with box
type of operation	sensor operation
type of sensor	opto-electronic sensor
type of shower	in-wall fitting
Volume flow rate bypass PWH	0.05 l/s
volume flow rate at 3 bar	0.23 l/s
water connection	threaded connection (external)
position of water connection	from side
Accent colour	chrome-look (glossy)
Basic colour	stainless steel

### Mandatory Accessories



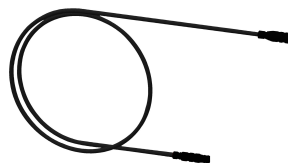
**R5 System box for in-wall mixer**

**2030028990**  
F5BX2001



**Power supply unit**

**2030039477**  
ACEX9001



**Extension cable 5 m**

**2030043814**  
ACEX9010

## KWC F5E-Therm Electronic thermostatic in-wall mixer

Modell-Linie: F5E | F5ET2031  
Showers | Electronic self closing shower

### Optional Accessories



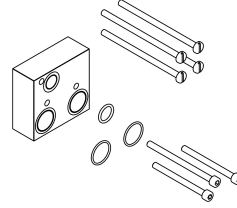
**Bidirectional remote control for electronic fittings F3 and F5**

**2030036654**  
ACEX9005



**2-button remote control for fittings F3 and F5**

**2030036849**  
ACEX9004



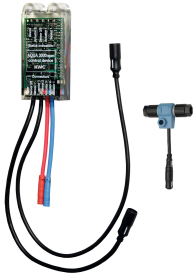
**Extension set**

**2030067889**  
ACXT9001



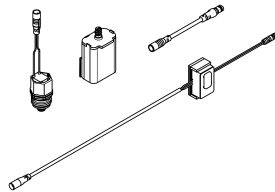
**Solenoid valve cartridge**

**2030003033**  
EAQFU0001



**Electronic module EM5 for F5 shower taps**

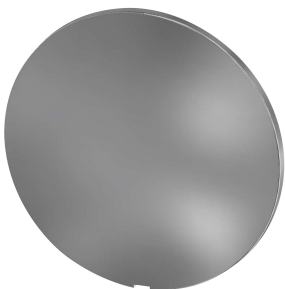
**2030041918**  
ACET2001



**Set for flushing the cold-water line**

**2030071564**  
ACXT2005

### Spare Parts



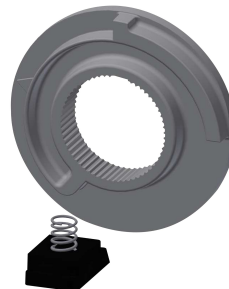
**Cover**

**2030003258**  
EAQLT0002



**Temperature handle**

**2030047082**  
ASXT9003



**Temperature stop**

**2030003296**  
EAQLT0003

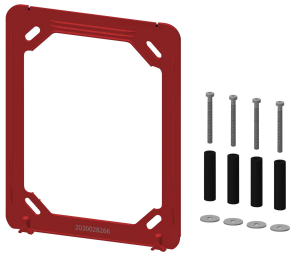


**Solenoid valve cartridge**

**2030003033**  
EAQFU0001

## KWC F5E-Therm Electronic thermostatic in-wall mixer

Modell-Linie: F5E | F5ET2031  
Showers | Electronic self closing shower



**Holding frame**

**2030045472**  
ASXX9004



**Stainless steel care set**

**2000109019**  
ZWSP0024



**Cleaning product CHROMOL**

**2000105091**  
ZWSP0023