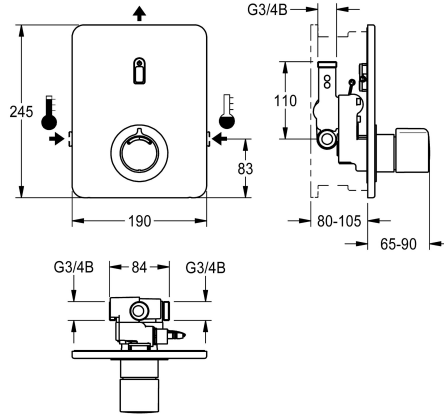


## KWC F3E-Therm electronic thermostat mixer

Modell-Linie: F3E | F3ET2004  
Showers | Electronic self closing shower



### KWC-No.

**2030067170**

F3E-Therm thermostatic mixer DN 15 as finished installation kit for wall mounting in mounting material, for shower facilities. Electrically controlled, connects to hot water and cold water. Function block with integrated solenoid valve cartridge and thermostat, with metal handle with adjustable and turn-proof temperature stop and option for manual thermal disinfection. All-metal construction, visible parts high-polished, chrome-plated. With holding frame and profile seal, stainless-steel cover plate 190 x 245 mm with covered screw fixing including sensor with control electronics, rosette, backflow preventers and strainers. Depth adjustability 25 mm. Activated

hygiene flushing 24 hours after last activation and storage of statistical data. With option for parameterization and communication via optional, bidirectional remote control.

Either for battery operation with 6 V lithium battery (CR-P2) per fitting or separate power supply via power supply unit 6.75 V/12 V DC.

Battery compartment including battery or power supply unit with extension cable must be ordered separately.

### Technical Data

additional connections

No

with backflow preventer

Yes

Built-in fitting model

Finishing section

calculation flow rate cold wat

0.15 l/s

calculation flow rate hot wate

0.15 l/s

circulation

No

compatible A3000 open

No

connection with pay water disp

not possible

default automatic hygiene flus

24h after the last activity

default flow time

30 Seconds

with filter

Yes

adjustable flow time

Yes

functional principle

electronic self-closing

for hand shower

No

hygiene flushing

Yes

diameter nominal

DN 15

inlet size

G 3/4 B

Locking mechanism

Top section, non-ceramic

material casing

stainless steel

material fitting

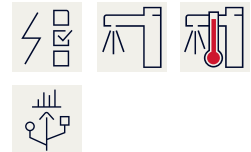
brass-look

maximum flow time

255 Seconds

minimum flow pressure

1 bar



## KWC

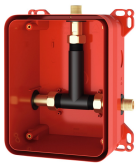
### F3E-Therm electronic thermostat mixer

Modell-Linie: F3E | F3ET2004

Showers | Electronic self closing shower

minimum flow time	1 Seconds
type of mixing	with thermostat
Parameterization	remote control
power supply connection	6,75 / 12 VDC
position of power connection	from top
power consumption	1.5 Voltampere
Type of power supply	Transformer
with rosettes/cover plate	Yes
protective shutdown	Yes
shower pipe draining	No
sound insulation	No
surface finish casing	satin finished
surface finish fitting	chromed
surface treatment fitting	polished
temperature limit	Yes
thermal disinfection	manual
with transformer/power supply	No
type of mounting	in-wall installation with box
type of operation	sensor operation
type of sensor	opto-electronic sensor
type of shower	in-wall fitting
volume flow rate at 3 bar	0.23 l/s
water connection	threaded connection (external)
position of water connection	from side
Accent colour	chrome-look (glossy)
Basic colour	stainless steel-look

### Mandatory Accessories



**R3 System box for in-wall mixers**

**2030036141**  
F3BX2001



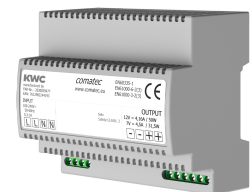
**R5 System box for in-wall mixer**

**2030028990**  
F5BX2001



**Battery compartment**

**3600002063**  
ACEX9023



**Power supply unit**

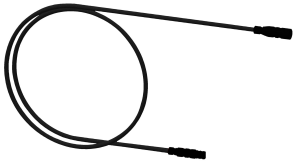
**2030039477**  
ACEX9001

## KWC

### F3E-Therm electronic thermostat mixer

Modell-Linie: F3E | F3ET2004

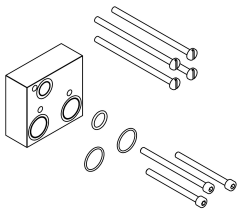
Showers | Electronic self closing shower



#### Extension cable 5 m

**2030043814**  
ACEX9010

#### Optional Accessories



#### Extension set

**2030067889**  
ACXT9001



#### Bidirectional remote control for electrical fittings F3 and F5

**2030036654**  
ACEX9005



#### 2-button remote control for fittings F3 and F5

**2030036849**  
ACEX9004

#### Spare Parts



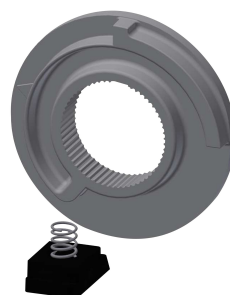
#### Cover

**2030048769**  
ASET2005



#### Temperature handle

**2030048766**  
ASET2004



#### Temperature stop

**2030003296**  
EAQLT0003



#### Solenoid valve cartridge

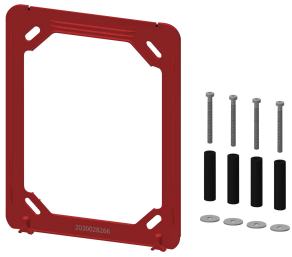
**2030003033**  
EAQFU0001

## KWC

### F3E-Therm electronic thermostat mixer

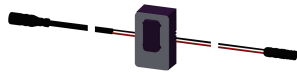
Modell-Linie: F3E | F3ET2004

Showers | Electronic self closing shower



**Holding frame**

**2030045472**  
ASXX9004



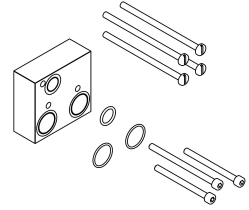
**Sensor, ID 12/00001**

**2030048628**  
ASEX2001



**Cover plate stainless steel**

**2030048775**  
ASET2007



**Extension set**

**2030067889**  
ACXT9001



**Cleaning product CHROMOL**

**2000105091**  
ZWSP0023



**Stainless steel care set**

**2000109019**  
ZWSP0024