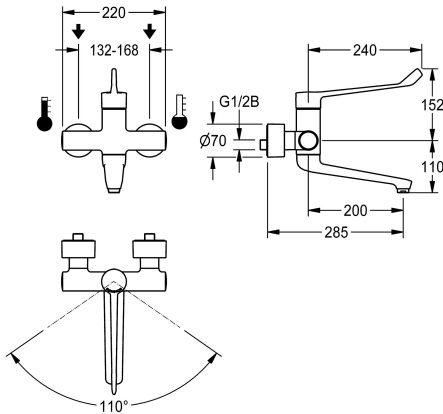


KWC F4LT-Med  
Thermostatic single lever mixer

Modell-Linie: F4 | F4LT1025  
Taps | Manual taps



KWC-No.

2030072408

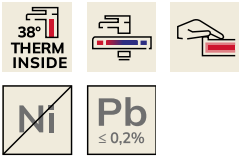
F4LT-Med thermostatic single lever mixer as DN 15 wall-mounted mixer, for wall mounting with lockable swivelling spout, for surgical sanitary facilities and unclean work spaces in the healthcare and nursing sector, lever length 240 mm. Thermostat-controlled mixer cartridge with expansion element and active scald protection, fail-safe against backflow as well as adjustable, turn-proof temperature stop, ceramic disc technology and flow rate controller 9.0 l/min. Without backflow preventer for optimised drinking water hygiene. Lever cap ergonomically designed in closed construction for contactless lever actuation. For connecting to hot and cold water.

Tap optimised for cleaning, scald-protected, safe-touch housing, all-metal construction, polished chromium-plated brass. Decoupled from the tap housing, volume-reduced, smooth water flow from low-lead brass (lead proportion  $\leq 0.2\%$ ), and without nickel coating. With thermal insulation components to reduce heat transfer from the tap housing to the cold-water line. Self-emptying spout with laminar jet controller. With adjustable and lockable connections with strainers, fully covered by depth-adjustable screw rosettes. 285 mm projection.

Technical Data

depressurised
functional principle
diameter nominal
inlet size
Locking mechanism
material fitting
minimum flow pressure
type of mixing
overall width
Pop-up waste set
with rosettes/cover plate
Spout
spout projection
surface finish casing
surface finish fitting
surface treatment fitting
temperature limit
type of mounting
type of operation
type of tap
volume flow rate at 3 bar
water connection

no
manual
DN 15
G 1/2 B
Tap section, ceramic
brass-look
1 bar
with thermostat
220 mm
no
yes
rotating, bottom
200 mm
chromed
chromed
polished
yes
wall mounting
manual operation
bib tap
0.15 l/s
S-connections



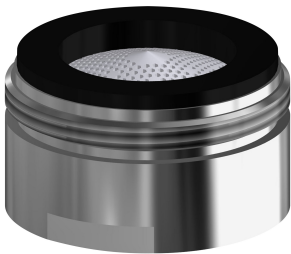


**KWC** F4LT-Med  
Thermostatic single lever mixer

**Modell-Linie: F4 | F4LT1025**  
Taps | Manual taps

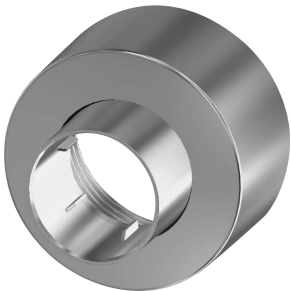
Accent colour	none
Basic colour	chrome-look (glossy)

**Optional Accessories**



**Aerator**  
**2030071309**  
ASXX1042

**Spare Parts**



**Screw rosette**  
**2030046777**  
ASXX9003