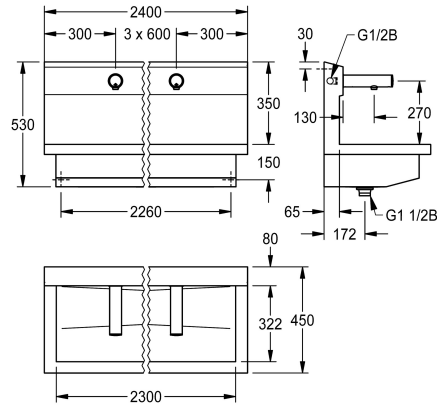


## KWC PLANOX

Washbasin unit with electronic bibtaps

Modell-Linie: PLANOX | PL24UEV

Washbasins & Washtroughs | Washtroughs



### KWC-No.

**360004040**

with four wash places

Dimensions 2400 x 530 x 440 mm (W x H x D)

NEW

PLANOX washbasin unit with seamless welded trough, with four wash places, suitable for wall mounting, for connection to premixed hot water or cold water from the rear right or left. Stainless steel housing, satin finish, material thickness 1.5 mm. Centre waste, G 1 1/2 B flat perforated waste, including mounting material. Ready for connection, with mounted F3E electronic bibtaps, opto-electronically controlled, control electronics, solenoid valve cartridge, 6 V lithium battery (CR-P2) and sensor in all-metal housing, polished

chromium-plated brass. Aerator with integrated flow rate controller 6.0 l/min. Activated hygiene flushing 24 hours after last activation, safety switch-off for continuous reflection and saving of statistical data. Parameterisation and communication possible via optional bidirectional remote control.

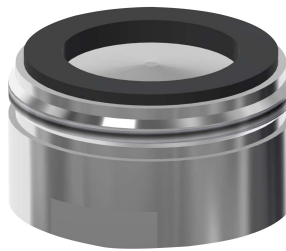
Dimensions 2400 x 530 x 440 mm (W x H x D)

Wash place width 600 mm

### Technical Data

material	stainless steel
material code	1.4301 Chrome Nickel steel V2A
number of waste holes	1
overall width	2,400 mm
rear upstand	no
splash back	yes
surface finish	satin finished
type of mounting	wall mounting
type of waste kit	perforated waste
waste hole position	centre
waste kit included	yes

### Optional Accessories



## KWC PLANOX

Washbasin unit with electronic bibtaps

Modell-Linie: PLANOX | PL24UEV

Washbasins & Washtroughs | Washtroughs

**Bidirectional remote control for  
electronical fittings F3 and F5**

**2030036654**  
ACEX9005



**2-button remote control for fittings F3  
and F5**

**2030036849**  
ACEX9004



**Aerator 6.0 l/min**

**2000104691**  
ASXX1015

**Theft-proof housing for aerator**

**2000104778**  
ZTAPS0005

**Stainless steel care set**

**2000109019**  
ZWSP0024

**Trap**

**2000101371**  
E-RNDX-SIPHON